



# ADAM'S

EST. 1887

SUNDAY 22<sup>ND</sup> NOVEMBER 2015 AT 12.00PM

FINE PERIOD INTERIORS AUCTION

## CONTACTS



Brian Coyle FSCSI FRICS  
CHAIRMAN



James O'Halloran BA FSCSI FRICS  
MANAGING DIRECTOR  
j.ohalloran@adams.ie



Stuart Cole MSCSI MRICS  
DIRECTOR  
s.cole@adams.ie



David Britton BBS ACA  
DIRECTOR  
d.britton@adams.ie



Nick Nicholson  
CONSULTANT  
n.nicholson@adams.ie



Kieran O'Boyle BA HDip ASCSI  
ASSOCIATE DIRECTOR  
k.oboyle@adams.ie



Ronan Flanagan  
FINE ART DEPARTMENT  
ronan@adams.ie



Katie McGale BComm MPhil  
FINE ART DEPARTMENT  
katie@adams.ie



Amy McNamara BA  
FINE ART DEPARTMENT  
amymcnamara@adams.ie

## CREATE A 'MY ADAM'S' ACCOUNT

You can now create your own account with us by signing up and registering your particulars online at [www.adams.ie](http://www.adams.ie)

The process involves uploading identification by way of passport or driving license and supplying valid credit card information. This is a once off request for security purposes, and once the account is activated you will not be asked for this information again. You can leave absentee bids online, and add, edit or amend bids accordingly as well as other useful functions including paying your invoice.

# FINE PERIOD INTERIORS

## AUCTION

Sunday 22<sup>nd</sup> November 2015 at 12 noon

## VENUE

Adam's Salerooms, 26 St Stephen's Green, Dublin D02 X665

## SALE CODE

This sale may be referred to as 8141 in all correspondence

## CATALOGUE

€10 or free PDF to download at [www.adams.ie](http://www.adams.ie)

## VIEWING

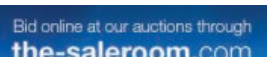
Thursday	19th November	9:30am - 5:00pm
Friday	20th November	9:30am - 5:00pm
Saturday	21st November	11:00am - 5:00pm

## COLLECTIONS

All lots must be paid for and collected before 5:00pm on Tuesday 24th November 2015 at the purchaser's risk and expense.

## ENQUIRIES

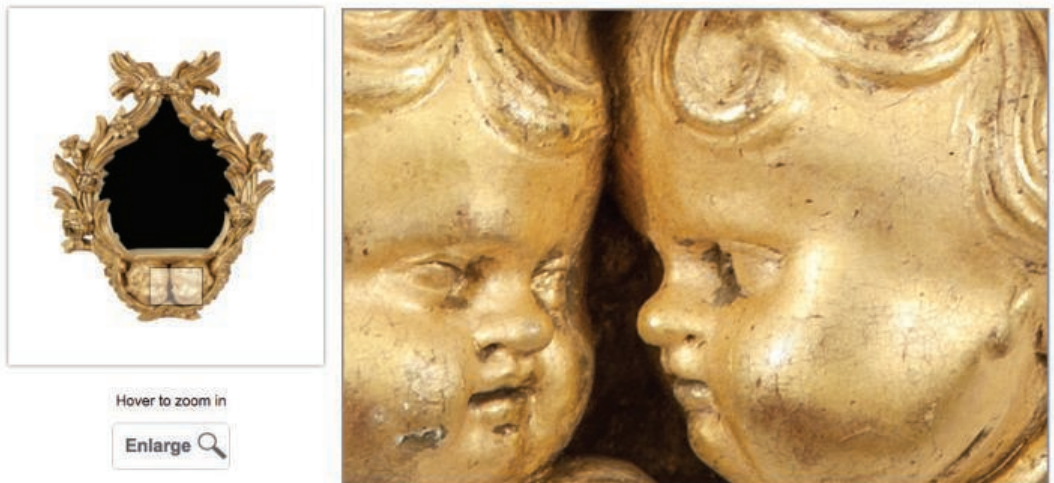
Telephone: +353-1-6760261  
Email: [info@adams.ie](mailto:info@adams.ie)  
Web: [www.adams.ie](http://www.adams.ie)





# ADAM'S Est. 1887

Visit Our Website For  
New High Resolution Zoom Feature



How to zoom?

Simply place your cursor over an image to see fine detail of that section of image.

See every detail of all lots in this sale at [www.adams.ie](http://www.adams.ie)

# IMPORTANT INFORMATION FOR PURCHASERS

## 1. Estimates and Reserves

These are shown below each lot in this sale. All amounts shown are in Euro. The figures shown are provided merely as a guide to prospective purchasers. They are approximate prices which are expected, are not definitive and are subject to revision. Reserves, if any, will not be any higher than the lower estimate.

## 2. Paddle Bidding

All intending purchasers must register for a paddle number before the auction. Please allow time for registration. Potential purchasers are recommended to register on viewing days.

## 3. Payment, Delivery and Purchasers Premium

Monday 23rd & Tuesday 24th November 2015, 10.00am - 1.00pm and 2.00pm -5.00pm. Under no circumstances will delivery of purchases be given whilst the auction is in progress. All purchases must be paid for and removed from the premises not later than 5pm on Tuesday 24th November 2015. Auctioneers commission on purchases is charged at the rate of 20% (exclusive of VAT). Terms: Strictly cash, bankers draft or cheque vouched to the satisfaction of the auctioneers, prior to sale. Purchasers wishing to pay by credit card (Visa & Mastercard) may do so, however, it should be noted that such payments will be subject to an administrative fee of 1.85% on the invoice total. American Express is subject to a charge of 3.65% on the invoice total. Please contact our accounts department prior to sale with your payment queries.

## 4. VAT Regulations

All lots are sold within the auctioneers VAT margin scheme. Revenue Regulations require that the buyer's premium must be invoiced at a rate which is inclusive of VAT. This is not recoverable by any VAT registered buyer.

5. Please note that any imperfections are not stated.

## 6. Absentee Bids

We are happy to execute absentee or written bids for bidders who are unable to attend and can arrange for bidding to be conducted by telephone. However, these services are subject to special conditions (see conditions of sale in this catalogue). All arrangements for absentee and telephone bidding must be made before 5pm on the day prior to sale.

7. All lots are being sold under the Conditions of Sale as printed in this catalogue and on display in the salerooms.



1 A PAIR OF IRISH SILVER CANDLESTICKS, Dublin 1975, each with vase shaped socket above a band of cast scallop shells and baluster column on circular spreading foot (weighted). 24cm high  
€ 400 - 600



2 A VICTORIAN SILVER PRESENTATION SALVER, London 1888, makers mark of Walter & John Bernard, of shallow circular form, the plain centre engraved with initialled cartouche within a raised fluted border (c. 17ozs). 25.5cm diameter  
€ 200 - 400



3 A GEORGE III BRIGHT CUT TEAPOT, London 1810, maker's mark of William Vincent, of octagonal form, fitted with timber handle and finial, the body engraved with bellflowers and foliate swags (c. 15ozs). 15cm high  
€ 250 - 350



4 A LATE VICTORIAN SILVER FRUIT BOWL, Sheffield 1900, makers mark of James Deakin & Sons embossed and chased with c-scrolls, flowers and foliage around vacant cartouches (c. 11.5ozs). 19.5cm diameter  
€ 300 - 500



- 5 A SMALL SILVER GOBLET,  
Sheffield 1977, struck with rose and Silver Jubilee  
mark, by E.H. Rarkin & Co., with gilt interior, with  
applied fleur-de-lys and Iron Cross symbols, raised on  
pedestal foot (c. 5ozs). 10.8 cm high.

€ 60 - 80

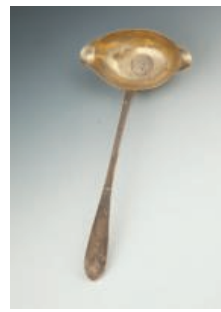


- 6 AN EDWARDIAN SILVER OVAL BREAD  
BASKET,  
Chester 1906, mark of George Nathan & Ridley Hayes,  
with plain centre and raised sides embossed with floral  
and shell groups on a pierced trellis ground (c. 9ozs).  
31.5cm long x 24cm wide x 5.2cm high.

€ 300 - 500

- 7 A VICTORIAN SILVER TEA CADDY,  
Chester 1896, mark of George Nathan & Ridley Hayes,  
of bombe form, the hinged lid decorated with acanthus  
leaves and floral swags, repeated again to the body, en-  
graved with initials and dated '1872-1897,' raised on shell  
capped and paw feet (c. 8ozs). 15cm high.

€ 150 - 250



- 8 AN IRISH VICTORIAN BRIGHT CUT SILVER  
LADLE,  
Dublin 1838, with double lipped bowl, gilded and inset  
with an earlier coin, tapering handle and headed with  
engraved star, retail mark of G. Brown (c. 3ozs).

€ 150 - 200



- 9 A GEORGIAN REVIVAL BRIGHT CUT SILVER  
TEAPOT,  
Birmingham 1923, of octagonal form, with hinged  
cover and ebonised finial, decorated with bright cut  
bands and vacant shield-shaped reserve (c.12.5ozs).  
23cm wide over handle and spout

€ 150 - 250



- 10 A MISCELLANEOUS COLLECTION OF  
SILVER ITEMS,  
comprising  
- an Art Deco miniature toast rack with arched  
divisions  
- a late Victorian oblong box  
- two napkin rings  
- an ink pot  
- convex cigarette case, etc.  
(c. 15ozs in all) (11)

€ 200 - 300





- 11 A VICTORIAN SILVER CENTRE BOWL,  
Sheffield 1896, Joseph Rogers & Sons, with foliate cast collar and plain bulbous body on domed circular foot (c. 21ozs). 19cm high

€ 300 - 500



- 12 A LATE VICTORIAN OVAL SHAPED BOWL,  
London c. 1897, mark of Henry Brind, the pierced body with vacant cartouches to either side, surrounded by chased repoussé decoration of floral swags, birds and foliate decoration, supported on scroll feet (c. 29.5 ozs). 27.3 cm long x 19.5 cm wide x 12.5 cm high.

€ 400 - 600



- 13 A LARGE IRISH ARTS AND CRAFTS TWO HANDLE SILVER TRAY,  
Dublin, retailed by Johnstons of Dublin 1909, makers mark of Edmond Johnson, engraved with presentation inscription to the Lord Mayor of Dublin 1909. 55 x 37cm

€ 1,200 -1,800



- 14 A SILVER BONBON DISH OF OVAL FORM,  
Sheffield 1928, mark of Cooper Brothers & Sons Ltd., with applied beaded rim, the oval body with pierced geometrical and fluted decoration, supported on matching splayed pedestal foot. 17.5cm long x 12.7cm wide x 6.3cm high; together with a matching smaller example, 14.3cm long x 9.5cm wide x 5cm high, (c.5.5 ozs in all). (2)

€ 100 - 200



- 16 A COLLECTION OF FOUR IRISH SILVER COMMEMORATIVE PLATES, Dublin 1973, Royal Irish Ltd, depicting "The Choir, St. Patrick's Cathedral, Dublin"; "Jonathan Swift, Dean, St. Patrick's Cathedral, Dublin 1713-1745"; "Exterior of St. Patrick's Cathedral, Dublin" and "St. Patrick" (c. 41oz in all), 22.8cm diameter each (4)

€ 300 - 400

- 17 AN ART DECO SILVER ENTREE DISH AND COVER  
Sheffield 1941, makers mark Gladwin Ltd, the top with twin side handles and alternating reed banding (c. 54ozs). 29 x 20cm

€ 500 - 700



- 18 A SILVER THREE PIECE TEA SET, London 1896, makers mark of Barnard, comprising a teapot, sugar bowl and cream jug, each of oblong shape, partially fluted bodies and supported on spherical feet (c. 44ozs) (3)

€ 400 - 600



- 19 A SCOTTISH GEORGE III SET OF THREE SILVER TEA CADDIES, Edinburgh 1772, maker's mark of Alexander Gardiner, in a mahogany case, the set comprising a pair of rectangular bombé caddies and a matching square bombé caddy, decorated all over with repousse chased and engraved asymmetrical scroll, acanthus leaf and shell motifs and raised on scroll feet, the pull-off lids with flat domed tops, contained in a plush lined compartmented carrying case, with cast brass handle to lid and raised on paw feet, with lock and key (c. 24ozs in all). 30.5 x 14 x 20cm high

€ 3,000 - 5,000



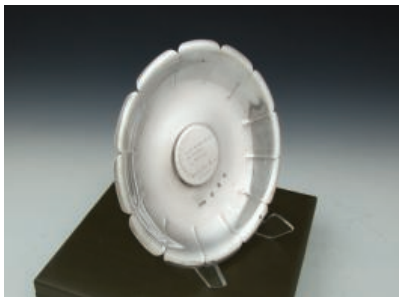
20 A SILVER TABLE BOX AND COVER,  
London 1965, of rectangular form, with engine turned decoration and raised foliate cast border, gilded interior (c. 9ozs)

€ 150 - 200



21 AN IRISH PROVINCIAL SILVER SUGAR BOWL,  
Limerick c.1770, by Paul Walsh of Limerick, the hemispherical body with fold-over rim and spiral fluting, engraved to an oval reserve, on shell capped scroll legs and pad feet, struck with maker's mark only (c.4.5ozs)

€ 600 - 1,000



22 A COMMEMORATIVE IRISH SILVER SALVER,  
Dublin 1966, makers mark of "E.M" and 1916 commemorative "Sword of Light" mark, with plain central reserve and wavy pie crust rim, raised on claw and ball feet. 30.3cm diameter (c. 23 ozs)

€ 200 - € 300

23 A PAIR OF IRISH SILVER GOBLETS,  
Dublin 1977, mark of George Bellow and Sons, each with gilded interior, repousse chasing and engraved foliate and scroll design, raised on circular spreading base, engraved with crest (c. 9.5ozs). 12.5cm high

€ 300 - € 500



24 A GEORGE IV SILVER THREE PART TEA SERVICE,  
Dublin 1829, makers mark of James Fray, of squashed melon form, comprising tea pot, sugar bowl and cream jug, each profusely chased and embossed with floral and foliate decoration around cartouches, the tea pot with hinged lid and rose finial, each applied with out-turned leafy rim and acanthus scroll handles, raised on shell cast scroll feet (c. 48.5ozs in all)

€ 600 - € 900



25 AN IRISH SILVER SUGAR BOWL,  
Dublin, modern, in mid-18th Century style, the exterior with spiral flutes and punched decoration, rising to an out turned rim, on shell capped scroll legs. 13cm diameter;  
together with a Georgian style cream jug, of oblong form, with partial fluting, applied with angled handle (c. 12ozs in all). (2)

€ 250 - € 350



26 AN AMERICAN STERLING STANDARD FIVE-PIECE SILVER TEA AND COFFEE SERVICE, stamped J.E. Caldwell, Philadelphia, comprising of a coffee pot, teapot, sugar bowl, cream jug and a two-handled bowl and cover, each of panelled, hexagonal form, with classical design, gilded interior (c. 82ozs) the coffee pot 24.5cm high (5)

€ 1,000 - 2,000



27 A REGENCY THREE PIECE SILVER TEA SERVICE, London 1819, makers mark of Joseph Craddock & William Reid, of circular baluster form comprising a teapot, sugar bowl and cream jug, with leaf capped scroll handles, gadroon rims and with a central band of floral rosettes raised on acanthus leaf and paw feet (c.45ozs in all)

€ 600 - 800



28 A GEORGE VI SILVER SHAPED CIRCULAR PRESENTATION SALVER, Sheffield 1941, makers mark of Atkin Brothers, with raised 'pie crust' rim, on four scroll feet (c. 44ozs). 36.5cm diameter

€ 400 - 600



29 A SUITE OF EDWARDIAN SILVER TAZZAS, Chester 1903 & 1904, makers mark of Thomas Latham & Ernest Morton, comprising a large shaped circular tazza with cast border above repousse lion's head plaques and pierced arabesques, raised on a spreading foot and a pair of smaller matching tazzas. (c.46ozs in all). 28 x 20.5cm diameter, 12.7 x 10.5cm high (3)

€ 600 - 800



30 A LARGE VICTORIAN SILVER TWIN HANDLED OVAL SERVING TRAY, Sheffield, 1855, the twin scroll handles on a shaped and pierced border surrounding an etched reserve with eagle crest and motto "PERSEVERE", 77cm wide, 55cm deep,

€ 1,000 - 1,500



31 A CONTINENTAL ALPACA WHITE METAL MODEL OF A GALLEON, with three masts, bowsprits to both ends and dragon figurehead, the ship modelled with many details including sailors, rope ladders, ships wheel, anchor, etc., raised on twin supports of opposing stylised dragons, stamped "Alpaca", 46.8cm high, 54.6cm wide, 22.8cm deep

€ 1,000 - 1,500



32 A MODERN SILVER AND CUT GLASS  
CENTREPIECE,  
London 1977, surmounted with a Waterford circular  
bowl supported on a naturalistic silver stand modelled  
as children playing under an oak tree, on a shaped  
naturalistic base (c. 56ozs). 29cm high

€ 800 - 1,200



33 A LATE 18TH CENTURY IRISH GEORGE III SILVER SAUCEBOAT,  
 Dublin, no date mark, mark of Matthew West, the helmet form body with repoussé chased and engraved decoration depicting a milkmaid scene, with punched rim, applied s-scroll handle, raised on shell capped and pad feet, 9.8cm high, 17.2cm wide;  
 together with a mid 18th century Georgian silver sauce boat, Dublin, no date mark, the plain body inscribed with bright cut initials 'MB' to one side, applied s-scroll handle, raised on later lion capped ribbon wrapped legs terminating in paw feet, 8.2cm high, 14cm wide. (c. 10ozs in all) (2)

€ 700 - 1,000

34 A SMALL VICTORIAN SILVER SHAPED CIRCULAR SALVER,  
 Edinburgh c. 1897-98, mark of David Crichton, retailed with David Crichton, 89 Princes Street, Edinburgh, the pie crust rim interposed by anthemias, surrounding a plain central reserve with inscription "To the Adjustment of the Scottish Eight from the Captain 1881 to 1897," raised on three scroll feet (c. 9.5ozs). 22.3cm diameter.

€ 200 - 400



35 AN AMERICAN SILVER SWING HANDED BASKET IN THE ROCOCO STYLE,  
 stamped 'STERLING' and 'TIFFANY & CO.', the pierced handle with bell flower and scroll decoration, the oval body pierced with foliate scrolls, raised on acanthus leaf capped scroll feet (c. 23 ozs). 26.5cm long x 22.3 cm wide.

€ 300 - 500



36 AN ART DECO SILVER HOT WATER POT,  
 Birmingham 1937, makers mark of Blackensee & Sons, with ebonised handle;  
 together with a Victorian Christening cup, marks partially rubbed, engraved with crests (c. 20ozs). (2)

€ 200 - 300





37 A PAIR OF GEORGIAN STYLE SILVER SAUCE BOATS,  
Sheffield 1966, makers mark of Viner's Ltd each with  
serrated rim and scroll supports (c. 6ozs)

€ 150 - 200



39 A PAIR OF GEORGE III SILVER SAUCEBOATS,  
London 1768, makers mark of C.H., each with punched  
rim and applied with c-scroll handle, on shell capped  
feet (c. 9ozs)

€ 500 - 700



38 A LARGE GEORGIAN STYLE CIRCULAR  
SALVER,  
Sheffield 1940, makers mark of Cooper Brothers &  
Sons Ltd, with plain centre enclosed by a raised wavy  
rim on three short scroll feet (c. 28ozs). 31cm diameter

€ 300 - 500



40 A PAIR OF GEORGE III SILVER TABLE  
CANDLESTICKS,  
Sheffield, c.1904, mark of Walker & Hall, each with  
urn shaped sconces, fluted tapering shafts, raised on  
shaped oval pedestal feet (weighted). 29.5 cm high

€ 600 - 800



- 41 A MISCELLANEOUS COLLECTION OF SILVER COMPRISING
- An Edwardian silver teapot, Birmingham 1906, with partially fluted body and decorated with ribbon tied drapery swags
  - A Irish silver sauce boat, Dublin 1920, mark of West & Son, with gadroon rim, acanthus wrapped 's' scroll handle and raised on shell capped hoof feet
  - A plain silver cream jug, Birmingham 1931, with serrated rim and scroll handle
  - A plain silver sugar bowl, London 1909, on circular foot; and another similar example, etc. (c.22 ozs all in)

€ 300 - 400



- 42 A SET OF SIX BRIGHT CUT SILVER COFFEE SPOONS,  
in fitted case, Sheffield, each with feathered tapering handle;  
together with a Scottish fiddle pattern sauce ladle,  
Edinburgh 19th century (7)

€ 100 - 150



- 43 A LARGE ART NOUVEAU SILVER SPILL VASE,  
London c.1905, of flared tapering form (weighted).  
30cm high

€ 200 - 300



- 44 AN 82 PIECE ALVESTON PATTERN SILVER CANTEEN OF CUTLERY,  
Sheffield 1972, makers mark of Robert Welch,  
8 place settings, comprising:
- 8 table forks
  - 8 table knives
  - 8 soup spoons
  - 8 dessert spoons
  - 8 tea spoons
  - 8 coffee spoons
  - 8 table knives
  - 8 fish forks
  - 8 fish knives
  - two large serving spoons
- all contained within a timber and velvet lined fitted case.  
(c.122oz including knives);  
together with a hardback copy 'Robert Welch:  
Design in a Cotswold Workshop', first edition, 1973  
(82)  
\*Please note, this lot comes with the original receipt from  
Heal's of Tottenham Court Road

€ 3,000 - 5,000

- 46 A GEORGE V SILVER SHAPED CIRCULAR PRESENTATION SALVER,  
Sheffield 1934, makers mark of James Deakin & Sons,  
with raised pie crust rim on four scroll feet (c. 19ozs).  
25.5cm diameter

€ 200 - 400



- 47 A PAIR OF MODERN SILVER SAUCE BOATS,  
20th/21st century, import marks only, each with  
gadrooned wavy rim, feather wrapped 's' scroll handle,  
and raised on shell capped scallop feet, stamped 925  
(c.14 troy ozs. all in). 17.5cm wide over handle and  
spout

€ 150 - € 250



- 48 A VICTORIAN SILVER DESK STAND,  
Gerard Fox, London 1881, of shaped rectangular form,  
having two baluster ink pots with fluted banding and hinged  
lids flanking a central pen stand, the frame decorated with  
gadroon banding, raised on open pierced scroll feet

€ 500 - 800

- 49 A PAIR OF GEORGE II STYLE SILVER GILT OPEN FRAME CANDLESTICKS,  
Royal Irish Silver Company, Dublin, the foliate cast  
sconces raised on tripartite scroll frame supports and  
tiered scroll base. 18cm tall

€ 500 - 700





49A

A VICTORIAN THREE LIGHT CANDELABRUM, Sheffield 1887, makers mark of Haworth Eyre & Co. Ltd (James Kebberling Bembridge) the reeded scroll branches with wyverne fluted sconces, with central sconce raised on fluted tapering centre column and weighted circular base. 44cm tall

€ 400 - 600

50

A LARGE SILVER PLATED CIRCULAR WINE COOLER

with cast vine border and deep body. 69.5cm diameter

€ 150 - 250



51

A SET OF THREE SILVER PLATED OVAL DOMED DISH COVERS,

with fluted tops above gadroon borders, in two sizes, crested, 49 x 34cm and 36 x 25cm

€ 200 - 400

51A

A PAIR OF 19TH CENTURY SILVER PLATED WINE COASTERS,

with wavy circular rims, decorated with interspersed foliate engraved design, with outturned sides and inset timber bases. 18cm diameter

€ 80 - 120



52 A LARGE COLLECTION OF SILVER PLATED ITEMS, including an Elkington lobed dish, a fiddle pattern soup ladle, art deco cutlery etc.

€ 100 - 200



54 AN INDIAN REPOUSÉE WHITE METAL CENTRE BOWL, 19th century, decorated with a continuous hunting scene between leafy cast borders, with gilded interior. 15cm diameter

€ 150 - 250



53 A GEORGE III STYLE WHITE METAL MOUNTED COCONUT CUP, 18th century, with lobed mounted rim, plain polished coconut body, the central reserve adorned with crest bearing a pearly crown, two laurel branches, spearhead and mural coronet, raised on shell capped hoof feet. 7.5cm diameter x 8cm high

€ 600 - 800



55 A PAIR OF SILVER PLATED MODELS OF PARTRIDGES, each in individual stances, set with jewelled eyes, together with a continental silver coin box modelled in the form of a bound barrel, engraved with stylised timber grain, with a silver heart shaped locket, and a silver plated creamer and ladle, shaped as a milk churn (4)

€ 200 - 300



69 AN IRISH PROVINCIAL SILVER CRUCIFIX,  
Galway, late 17th/18th century, suspended on a chain of rosary beads and silver spheres, the cross 9cm high

€ 1,000 - 2,000



71 A COLLECTION OF TWENTY SEVEN PADRAIG PEARSE SHILLINGS,  
each with relief portrait of Padraig Pearse (1879-1916) on the obverse and Cuchulainn on the reverse, each 29cm diameter, seven boxed (27)

€ 150 - 250



70 AN ISLAMIC BRASS AND SILVER OVERLAID BOWL,  
19th century in Mamaluk style, engraved with bands of Kufic text

€ 300 - 400



72 A GERMAN DRINKING HORN,  
late 19th Century, with silver plated rim and supported on a silver plated display stand with pedestal base. 33.5cm high, 28cm wide

€ 100 - 200

A 19TH CENTURY BOHEMIAN LARGE GOBLET,  
the panelled body decorated with a wheel cut continuous landscape of deer running in a  
forest, with a large vacant oval reserve, raised on panelled knopped stem and a spreading  
foot. (30cm tall)

€ 300 - 500





74 A MOTHER OF PEARL AND LACE FAN, with plain sticks, the lace panel worked with a floral design, with case. 35cm closed

€ 100 - 150



77 A HAND PAINTED BLACK LACE FAN, depicting a young lady attended by winged cherubs, the stained mother of pearl sticks pierced and decorated with applied silver and gilt floral motifs. Signed, with case. 32cm closed

€ 200 - 300



75 A HAND PAINTED LACED MOTHER OF PEARL FAN, the carved sticks and guardsticks with applied silver floral decoration, in a fitted case. 32cm closed

€ 200 - 300



78 A FRENCH HAND PAINTED FAN, with tortoise shell guardsticks, the vellum leaf depicting a garden scene with a dancing couple and a musician, and with a large initial 'R' on the reverse, signed, 36cm closed

€ 200 - 300



76 A FRENCH LATE 19TH CENTURY MOTHER OF PEARL FAN, the hand painted leaf decorated with putti and signed M Dumas, the guardsticks with gilded and carved putti and floral decoration. 36cm closed



79 A SPANISH HAND PAINTED FAN, the satin leaf depicting figures in a rural village, with a matador figure verso, the wooden sticks with metallic floral decoration, signed, 35cm closed

€ 100 - 200

€ 200 - 300





80 A COLLECTION OF 19TH CENTURY AND LATER FANS, with a number of fine hand painted examples: including a faux tortoiseshell brisé fan decorated with chinoiserie scenes in gilt tones, and a French example with a wooden framework decorated with painted pugs in an interior fighting for a ball and inscribed 'La Lutte pour la ballon', and a carved ivory brisé fan (8).

*Provenance: The estate of Anne Bullitt*

€ 800 - 1,200



82 TWO MOTHER OF PEARL PIERCED AND GILDED FANS, together with an Austrian carved painted ivory brisé fan (3).

€ 300 - 500



81 A DIEPPE CARVED IVORY BRISÉ FAN, the front guard with deep carving depicting flowers and a coronet, 21cm closed

€ 200 - 300



83 A MOTHER OF PEARL FAN WITH HAND PAINTED VELLUM LEAF, depicting a rural village dance, with floral motifs to the reverse, the sticks carved and gilded with floral and figural decoration 27cm closed.

€ 200 - 300



84 A HAND PAINTED VELLUM LEAF FAN, depicting a rural scene, with floral motifs to the reverse, the mother of pearl sticks carved and gilded, 27cm closed.

€ 200 - 300

85 A LARGE 1920'S OSTRICH FEATHER FAN, with tortoise shell sticks, together with another feather fan (2).

€ 100 - 150

86

A SEVRES PARIAN  
GROUP OF APOLLO AND  
DAPHNE,

18th Century, impressed 'SEVRES' mark  
and incised 'Li' and 'A.B.10.mi.0.7', the ini-  
tials A.B. perhaps for Alexandre Brachard  
Jeune, depicting Apollo chasing Daphne  
and transforming into a laurel tree, her  
father the river god Peneus attempting to  
come to her aid to the right.  
50cm high x 39cm wide

€ 600 - 1,000



87 AFTER ANTONIO CANOVA (1757-  
1822)

Psyche Revived by Cupid's Kiss  
Alabaster, 34cm high x 36cm wide

€ 300 - 500



88 AFTER SIR WILLIAM RUSSELL FLINT (1880-1969)

Carlotta on the Loire (No. 384/850)

Coloured print, 50 x 68cm; together with another of 'The Three Graces' (No. 492/850) by the same hand (2)

€ 100 - 200

89 SIR WILLIAM RUSSELL FLINT (1880-1969)

A Mediterranean Castleated Town

Coloured print, 49 x 63cm

Signed; together with another signed coloured print of an interior by the same hand (2)

€ 150 - 200



90 SIR WILLIAM RUSSELL FLINT (1880-1969)

Teresa, Yolande and Anna Maria

Coloured print, 33 x 60cm

Signed; together with another signed coloured print of a woman with a basket by the same hand (2)

€ 150 - 200

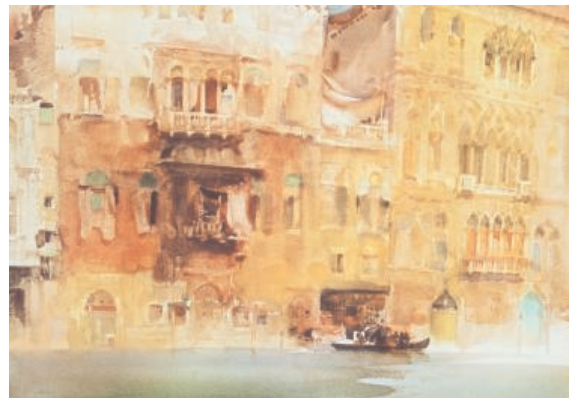


91 AN EARLY 19TH CENTURY ENGLISH IVORY CHESS SET, one side stained red, the other left natural, the kings with multi-baluster knops and urn-shaped tops, queens with multi-baluster knops and domed-shaped finials, the bishop tops in the form of reeded mitres, pawns with baluster knops and domed finials. The kings 10cm high, pawns 4cm high

€ 1,500 - 2,000

92 AFTER SIR WILLIAM RUSSELL FLINT (1880-1969)  
 Venetian Canal Scene (No. 129/750)  
 Coloured print, 48 x 68cm; together with 'Gossip, St. Jeanner' (No. 803/850) by the same hand (2)

€ 100 - 200





93 A WHITE METAL BUST CHESS SET PORTRAYING THE CONQUISTADORS AND AZTECS, each piece stamped with Spanish hallmarks and '.800' standard, one side representing the Conquistadors, the other representing the Aztecs; together with a chess board with emblems of the Conquistadors and Aztecs to the corners of the board. The Conquistador king 9.5cm high, Conquistador pawn 6.5cm high, Aztec king 8.5cm high, Aztec pawn 6.5cm high

€ 800 - 1,200



94 AN EARLY JAUQUES STAUNTON BOXWOOD AND EBONY CHESS SET, c.1849 - 50, the boxwood king stamped 'J. JAUQUES LONDON' to the base, the king side rooks and knights stamped with crown, contained within a green felt-lined mahogany Staunton box. The kings 8.9cm high, pawns 4.3cm high

€ 800 - 1,200



95 A CLUB SIZE JAQUES STAUNTON IVORY CHESS SET, c.1855-60, one side stained red, the other left natural, the unstained ivory king stamped 'JAQUES LONDON' to the underside of the base, contained within a deep blue velvet lined Spanish mahogany casket with pink Staunton label to the underside. The Kings 11.4cm high, pawns 5.3cm high

€ 8,000 - 10,000

#### Jaques Staunton Chess Sets

Jaques Staunton chess sets have been dubbed the Rolls Royce of chess sets and continue to be highly prized by collectors both for display and play.

In the mid-1800s John Jaques, an accomplished wood turner, recognised the shortcomings of the tall, elegant chess sets being produced by carvers on Fleet Street in London. Though beautiful, these pieces did not possess the wide, stable bases necessary for match play. Jaques set out to create a chess set possessing both beauty and functionality that would appeal to the middle class. He redesigned each piece creating "The Staunton Pattern", a pattern which has been the official standard for tournament play since 1924. Jaques' use of Howard Staunton's name, the unofficial World Chess Champion in 1843, served to promote the newly designed sets and to elevate their level of prestige.

Another unique quality of the Staunton sets is the documented information about dating the sets and their evolution over the long period of their production. The main indications of date being the name stamp on the kings and the trade label found in all boxes containing each set, the variations of which can be found in the two sets featured in this sale.



96

FREDERICK RUSCH

The Ice Man, a figure of a man lifting a block of ice with a large ice pick, raised on black marble base. 31cm tall

€ 400 - 600

97

LÉON PILET (1836-1916)

A bronze group of a seated Classical woman examining a pointed amphora, raised on a black rectangular marble base, signed 'L.Pilet'. 26.5cm high

€ 300 - 400







98

JOE DESCOMPS (1872-1948)

A bronze figure of a naked Dutch girl leaning against a tree stump wearing clogs, raised on circular socle with a continuous band of geese in low relief, having a foundry mark 'Susse Frères'. 33cm in total

€ 500 - 800



99 IRENEE ROCHARD (1906-1984)  
A Racehorse with Jockey up  
Bronze, 29cm long  
€ 100 - 150

100 A COPELAND PARIAN CHINA SPORTING GROUP  
of a fox being attacked by two hounds, modelled by  
Carleton McCarthy, dated 1863, 33 x 17 x 22cm high  
€ 100 - 150



101 AN AUSTRIAN COLD PAINTED BRONZE  
MODEL  
of an English Springer Spaniel, 9cm long  
€ 150 - 200



102 AFTER CHARLES LEMANCEAU,  
an Art Deco green glazed ceramic group of two  
running hounds, impressed signature. 54 x 12.5 x  
31cm high

€ 250 - 350



103 AFTER PIERRE JULES MENE  
Sporting Group of Two Hounds  
Bronze, 19 x 10.5 x 15cm high  
Signed on oval base

€ 300 - 400



104 AFTER CECIL ALDIN (1870-1935)  
Coursing  
Coloured print, 31 x 39cm

€ 50 - 80



106 JAMES GILLRAY (19TH CENTURY)  
After C. Lorraine Smith  
"Posting in Ireland"  
Hand Coloured engraving, 29 x 39cm  
Published by H.Humphreys, St. James Street

€ 150 - 250



105 AFTER FRANCIS WHEATLEY RA  
A pair of Cries of London coloured prints  
'Hot Spice Gingerbread, Smoking Hot';  
'Do you want any Matches?'  
40.5 x 30.5cm each;  
together with a colour print of The Rotunda Hospital  
(3)

€ 50 - 100



107 GEORGE SHALDERS (C.1868)  
Resting with Sheep  
Gouache, 22.5 x 29cm  
Signed and dated 1868

€ 500 - 800



108 LADY KATE DOBBIN (1868-1955)  
 Inniscarra Abbey on the River Lee  
 Watercolour, 35 x 45cm  
 Signed. Inscribed artist's label verso

*Exhibited: Royal Hibernian Academy Annual Exhibition, Dublin, 1928, Cat. No. 239*

Born in Bristol, Lady Kate Dobbin married Alfred Graham Dobbin, a tobacco manufacturer and High Sherrif of Cork. She studied drawing and painting at the Crawford Municipal College of Art, Cork in the early 1890's and exhibited extensively with the Royal Hibernian Academy between 1894 and 1947. She painted mainly in watercolour and was a regular contributor to the Watercolour Society of Ireland over a period of 50 years. She is known for her scenes of surrounding landscape and countryside and particularly favoured the sea, mist and twilight, and was also well regarded for her flower studies. She continued painting up until her death in her 80's and her work can be found in the Cork Municipal collection and numerous private collections.

€ 250 - 350



109 THOMAS MILES RICHARDSON  
 Lake and Mountain Landscape  
 Watercolour, 13 x 20cm  
 Signed and dated 1854

€ 50 - 100



110 ATTRIBUTED TO JOHN WILSON  
 CARMICHAEL (1800-1868)  
 Coastal Scene at Sunset, c.1831  
 Watercolour, 12 x 17cm

€ 80 - 120



111 FRANCIS S. WALKER (1848-1916)  
Barking Church, Essex  
Oil on panel, 13 x 23.5cm  
Signed, inscribed and dated 1895 verso

€ 100 - 200

112 STYLE OF JAMES AUMONIER (1832-1911)  
Pasture with Wild Flowers

Oil on board, 23 x 21cm

€ 100 - 200



113 CHARLES ROWBOTHAM (1856-1921)  
An Alpine Village  
Watercolour, 15.5 x 17cm  
Inscribed faintly in pencil

€ 50 - 100



114 CHARLES FRANCOISE PROSPER GUÉRIN (1875-1939)  
Portrait of a Young Woman Wearing Pearls  
Oil on canvas, 65 x 53cm  
Signed with initials, also signed and numbered '915' on stretcher verso

€ 700 - 1,000



115 A LATE 19TH CENTURY ENGLISH MAHOGANY RECTANGULAR  
TWIN PEDESTAL DESK,  
in the Empire taste, with inset leather scriber, above an arrangement of eleven  
drawers, the pedestals flanked by ormolu mounted columns and with applied  
ormolu mounts and ring handles; stamped Cowtan & Sons, Oxford St. London;  
the locks stamped Cope & Collinson. 142 x 64 x 76cm high

€ 1,500 - 2,000



116 A VICTORIAN ROSEWOOD FRAMED TUB BACK CHAIR, the rail back, with spiral turned gallery, raised on scroll feet.

€ 100 - 200



119 A VICTORIAN MAHOGANY DOUBLE DROP LEAF TABLE, mid 19th century, of rectangular form, with plain moulded top and single frieze on ring turned tapering legs, 106cm long, 72cm high

€ 150 - 250



117 AN EDWARDIAN INLAID MAHOGANY TUB BACK TWO-SEATER SETTEE, inlaid in bone and raised on cabriole legs.

€ 50 - 100



120 A GEORGE III MAHOGANY RECTANGULAR FOLDING TOP TEA TABLE, the plain frieze centred by a carved scallop shell raised on plain square supports, 76 x 36cm (closed)

€ 400 - 600



118 A 19TH CENTURY FLAME MAHOGANY PEDESTAL CUPBOARD, of cylindrical form, with hinged top and outset plinth base, 58cm high, 46cm diameter

€ 300 - 500



121 A GEORGE III MAHOGANY HALF-CIRCULAR TRIPLE FOLDING TOP COMBINATION CARD/TEA TABLE, with sunken counter wells and plain frieze raised on slender cabriole legs with pad feet.

€ 400 - 600





122 A PAIR OF BRASS MOUNTED MARQUETRY MUSIC CHAIRS with splat backs having musical motifs on satinwood ground, flanked by twin fluted side columns, above oval upholstered seats and raised on fluted tapering legs

€ 300 - 500



124 A MATCHED PAIR OF FRENCH MAHOGANY, GILT-METAL AND MARBLE TOPPED TABLES, of oval form, each with shallow pierced gallery, one with cupboard space, the other with three short drawers, on turned supports joined by kidney shaped undertier. Each approx. 81cm high x 49cm wide

€ 700 - 1,000



123 A FRENCH GILTWOOD FRAMED CHILD'S HIGH CHAIR, the panel back, seat and armrests covered in tapestry and raised on cabriole legs and stretcher. 99cm high

€ 350 - 450



125 A LOUIS QUINZE STYLE STAINED BEECH FRAMED ELBOW CHAIR, with gilt brass mounts, the back and seat covered in padded hide and raised on cabriole legs with gilt brass paw feet

€ 150 - 250



126 A FRENCH KINGWOOD MARQUETRY UPRIGHT CHEST, of four drawers, with red veined marble top, each drawer with bevelled edges and with floral and scroll decoration, raised on shaped feet with gilt metal mounts. 36 x 51cm x 100cm high

€ 600 - 800

127 AN EDWARDIAN CIRCULAR INLAID SATINWOOD OCCASIONAL TABLE, the crossbanded top with central rosette and radiating bellflower drops within an undulating ribbon and bellflower band, raised on turned columns and circular undertier with brass gallery rail. 75cm diameter

€ 600 - 800



128 AN ARTS AND CRAFTS WALNUT UPRIGHT SHEET MUSIC CABINET, the slope top above a fall front door, opening to reveal a folding series of compartments and raised above two open lower tiers on platform base. 55 x 31.5 x 144cm high

€ 400 - 600



129 A PAIR OF FRENCH LATE 19TH CENTURY GILT BRASS CHENET, of architectural form, the curved frame surmounted with baluster urns with flame finials and decorated with acanthus leaves, cherub masks and foliate swags. 39cm high x 39cm long

€ 500 - 800



130 A SUITE OF LOUIS QUINZE STYLE SEAT FURNITURE, comprising a compact canape and a pair of armchairs, the giltwood frames carved with ribbons and leaf motifs, the oval panel backs and seats covered in tapestry cloth and raised on turned fluted tapering legs

€ 500 - 800



131 AN EDWARDIAN PAINTED MAHOGANY AND SATINWOOD BONHEUR DU JOUR, the raised back with arched mirror back flanked by twin cupboards fitted for stationery, the writing surface with folding top above a single frieze drawer, decorated with foliate sprays and raised on square tapering legs. 83cm wide x 45.5cm deep x 112cm high

€ 600 - 800



132 A LOUIS QUINZE STYLE KINGWOOD VITRINE,  
with ormolu mounts, having single curved glazed panel door, the lower panel  
painted in the Vernis Martin style, signed Albertini and similarly  
decorated side panels, raised on cabriole legs. 80cm wide x 38cm deep  
x185cm high

€ 1,500 - 2,500



133 A ROCOCO REVIVAL CARVED GILTWOOD MIRROR, the oblong shaped frame with trellis filled scroll cresting, the plate with foliate swags, the frame within platforms for porcelain, two supported by dragons. 125cm high, 140cm wide

€ 1,200 - 1,800



134 A LOUIS QUINZE STYLE MARQUETRY BUREAU PLAT, of compact size, the shaped rectangular top with inset leather scriver within a bold moulded brass rim, with fitted three frieze drawers with floral decoration and raised on cabriole legs with gilt brass mounts. 97 x 59 x 75cm high

€ 800 - 1,200



135 A FRENCH GILT METAL MOUNTED MAHOGANY RECTANGULAR TWIN DOOR DISPLAY CABINET, in the manner of Francois Linke, with marble top, the lower panels decorated with figures in the Vernis Martin style, raised on slender cabriole legs. 114.5cm wide x 38.3cm deep x 159.3cm high

€ 1,000 - 1,500



136

A FRENCH 19TH CENTURY INLAID WALNUT BEDSIDE CABINET, the top with raised sides above a fall front section enclosing pigeon holes and drawers, raised on slender cabriole legs, the entire with cast gilt metal mounts. 35cm square, 88cm tall

€ 1,000 - 1,500

137

AN ART NOUVEAU GLASS CEILING LIGHT, by Muller Frères, Lunéville, France

€ 400 - 600



138

AN 18TH CENTURY FRENCH CARVED FRUITWOOD ARMCHAIR, with padded back, armrests and seat covered in tapestry cloth and raised on cabriole legs

€ 400 - 600







139 A FRENCH EMPIRE STYLE ORMOLU MOUNTED MAHOGANY CRUTCH FRAME CHEVAL GLASS, the oval plate supported by turned tapering columns and raised on a panel base with side supports. 92cm wide x 181cm high

€ 1,000 - 1,500



141 A LARGE STAINED OAK LIBRARY STAIRS, the upper section with platform and guard rail. 253cm high

€ 600 - 800

142 A VICTORIAN GILTWOOD AND GESSO OVERMANTLE MIRROR, 19th century, the glass plate contained within moulded surround and applied with acanthus scrolls to base, 144 cm high, 144 cm wide

€ 400 - 600



143 A FRENCH ROSEWOOD AND GILT METAL MOUNTED BUREAU PLAT, in Louis XV style, the shaped rectangular top inset with a gilt tooled leather panel, with foliate cast mounts to each corner, over a shaped three drawer frieze on cabriole legs. 179cm wide, 80cm deep

€ 1,000 - 2,000



144 A 19TH CENTURY RED SCAGLIOLI COLUMN  
the shaped square top above a fluted and reeded column  
€ 800 - 1000



145 A FINE SATINWOOD AND MARQUETRY INLAID SEMI-ELLIPTICAL COMMODE, BY JAMES HICKS OF DUBLIN, the rosewood banded top inlaid with a half patera with floral bandings with an outer band of stylised flower heads, and a band of flowerheads, and harebells, over a pair of glazed panel doors, enclosing a shelved interior, with marquetry panels of garden trophies to either side, on short tapering supports. (now with a plate glass top) 107 cm wide .

€ 3000 - 4000



150 A FRENCH MARQUETRY OCCASIONAL TABLE,  
the shaped square top with inlaid lattice decoration  
and gilt metal rim, raised on cabriole supports with gilt  
metal mounts and toe caps, 77cm high, 49cm wide

€ 400 - 600



151 A WILLIAM IV ROSEWOOD RECTANGULAR  
FOLDING TOP CARD TABLE,  
with braise-lined interior, above plain apron and a plain  
circular centre column, raised on a quadruped shaped  
platform base with paw feet, 92cm wide, 77 high

€ 800 - 1,200



152 A LATE VICTORIAN BRASS FRAMED  
NURSERY SPARK GUARD,  
with black wire panels, on platform base.  
142 x 27 x 48cm high

€ 350 - 450



153 A PAIR OF FRENCH EMPIRE STYLE  
ORMOLU MOUNTED MAHOGANY SQUARE  
BEDSIDE CABINETS,  
with red veined marble tops, above single frieze drawer  
and panel door cupboard enclosing a marble lined  
interior, the fascia with applied lyre, anthemion and  
laurel wreath motifs, raised on square legs and lower  
tier. 41 x 41 x 86cm high

€ 800 - 1,200



154 A 19TH CENTURY WALNUT MARQUETRY AND ORMOLU RECTANGULAR THREE DOOR CREDENZA, the frieze decorated with applied tongue and dart rim, above an acanthus border, the panel doors with marquetry flowers in an urn, the pilasters headed with ormolu therm mask corbals and raised on platform base. 184cm wide, 46cm deep, 117cm high

€ 1,500 - 2,000



155

A 19TH CENTURY WINDSOR STAINED ELM  
KITCHEN ARMCHAIR

€ 100 - 200

156

AN EDWARDIAN INLAID MAHOGANY  
ARCHTOP BRACKET CLOCK,  
with silvered dial and quarter repeating movement,  
raised on a tapering wall bracket. The clock 41cm high  
x 30cm wide

€ 500 - 800



157

A GEORGE IV STYLE MAHOGANY  
JARDINIERE STAND,  
of flared circular form surmounted with swing handle  
and brass liner on turned centre column and triform  
base, 51cm high

€ 250 - 350







158 ALFRED DE BREANSKI SNR. (1852-1928)  
Early Morning, Derwentwater  
Oil on canvas, 50 X 75cm  
Signed. Inscribed with title verso

€ 3,000 - 4,000



159 A SET OF EIGHT REGENCY MAHOGANY DINING CHAIRS,  
including two armchairs and six single chairs, each with a curved panelled and reeded bar  
toprail and similar splat between reeded stiles, each with padded seat on sabre legs

€ 1,000 - 1,500



160

A FINE LATE GEORGE III CARVED  
GILTWOOD SHAPED RECTANGULAR  
OVERMANTLE MIRROR,  
in the manner of Thomas Chippendale, the  
openwork rococo 'C' scroll frame surmounted by  
Ho-Ho birds flanking an asymmetrical scroll pendant,  
c.230cm high, 190cm wide



161

A PAIR OF EARLY VICTORIAN GILTWOOD, PLASTER  
AND GESSO RECTANGULAR OVERMANTLE  
MIRRORS,

the frame with 'C' scrolls, acanthus leaves and other foliate motifs, the  
arch cresting centred with a putto against an asymmetrical acanthus.  
c.245cm high, 176cm wide (2)

€ 6,000 - 8,000



162 A WHITE VEINED MARBLE PEDESTAL, 20TH CENTURY,  
in the form of a doric column, with solid black  
marble platform and corresponding base. 101cm high, platform 49.5cm diameter

€ 1,500 - 2,500

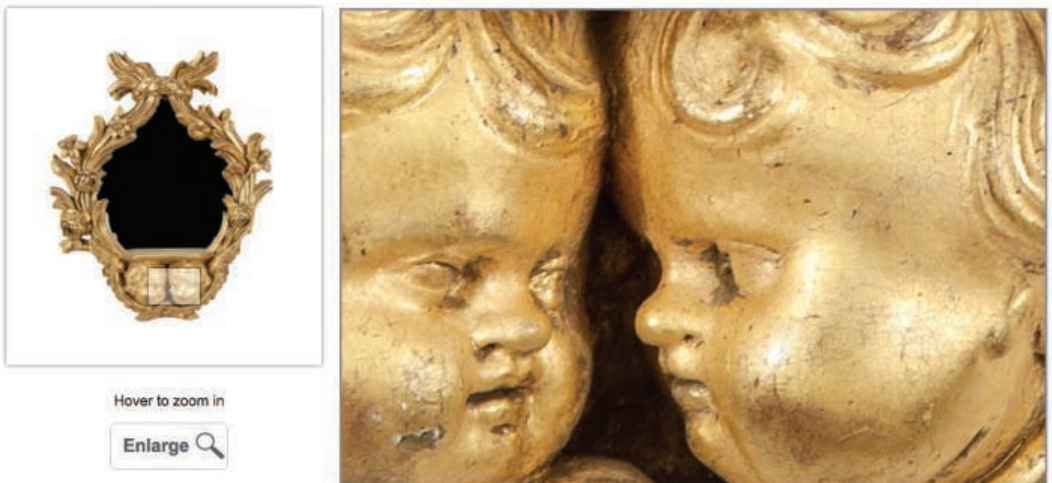


164 A GEORGE II WALNUT TALLBOY CHEST,  
with moulded cavetto cornice, above three short and three long graduated, cross and feather  
banded drawers, with fluted canted angles, the base with pull-out brushing slide, above three long  
graduated drawers, the bottom drawer centred by an apsidal parquetry demi-starburst and raised  
on bracket feet. 101cm wide, 57cm deep, 183cm high

€ 2,000 - 4,000

# ADAM'S Est. 1887

Visit Our Website For  
New High Resolution Zoom Feature



How to zoom?

Simply place your cursor over an image to see fine detail of that section of image.

See every detail of all lots in this sale at [www.adams.ie](http://www.adams.ie)



165 AN EARLY VICTORIAN ROSEWOOD CENTRE TABLE, the circular top crossbanded in burr-maple, with tapering shaft and spreading large shallow domed base with scrolled feet. 78cm high x 122cm wide

€ 1,000 - 2,000

166 AN EDWARDIAN MAHOGANY BREAKFRONT SIDEBOARD, in the neo classical taste, with brass galley back above twin pedestals with fluted frieze drawers and flanked by well carved ram's head terminal having single cupboards, flanking two frieze drawers with urn and swags in low relief. 212cm wide

€ 1,000 - 1,500



167

A 19TH CENTURY INLAID MAHOGANY  
OVAL DOUBLE DROP LEAF PEMBROKE  
TABLE,

the top with satinwood crossbanding and inlaid shelf  
motif, above a single frieze drawer with two brass han-  
dles and raised on slender square tapering supports,  
with brass castors, 77cm long, 99cm wide (when open)

€ 400 - 600



168

A GEORGIAN STYLE MAHOGANY  
TORCHERE STAND,

the circular top above a fluted column and tripod base,  
with claw and ball feet, 123cm high

€ 200 - 300



169

BELGIAN SCHOOL (19TH CENTURY)

Street Scene with figures

Oil on board, 43 x 36.5cm

Signed indistinctly and dated '1875'

€ 1,000 - 1,500



170

ARTHUR DE BREANSKI (THOUGHT TO BE A NAME VARIANT USED BY ALFRED DE BREANSKI JUNIOR, 1877-1945)

A sunset river landscape

Oil on canvas, 57 x 76cm

Signed lower right

€ 1,000 - 1,500

171 SHOOLHEIFER (20TH/ 21ST CENTURY)

View of waves crashing on rocks

Acrylic on canvas, 99.5 x 75cm

Signed

€ 300 - 500



172 FRENCH SCHOOL (19TH CENTURY)

Childlike Figures in a Garden Setting

A pair, watercolour and bodycolour, each 12.5 x 18cm

Signed indistinctly (2)

€ 300 - 500



173 ATTRIBUTED TO JOHN HENRY CAMPBELL (1757-1829)

Figures in an open landscape,

Watercolour, each 17 x 24cm (2)

€ 300 - 500



174      ATTRIBUTED TO NATHANIEL HONE THE  
ELDER RA (1718-1784)

Portrait of a Gentleman, half length seated  
Oval, oil on canvas, 25 x 20cm

€ 600 - 800



175      IRISH SCHOOL (19TH CENTURY)

Portrait of Lord Edward Fitzgerald  
Oil on panel, 20 x 15 cm

€ 200 - 300

176      FRENCH SCHOOL, 18TH  
CENTURY

Portrait of a Lady  
Pastel, 67 x 52cm

€ 700 - 1,000





177 WGR (VICTORIAN SCHOOL)  
 Scenes from the Boer War  
 A set of four watercolours, 28 x 22cm  
 Signed with initials and dated (18)94 and '95  
 Mounted but unframed (4)

€ 100 - 200



178 ATTRIBUTED TO EUGENE ISABEY (1803-1886)  
 Homes on the Edge of a Forest  
 Watercolour, 29 x 22.5cm  
 Signed

€ 50 - 100



179 ALBERT STEVENS (1872-1902)  
 Midday Sun, Eastbourne  
 Watercolour, 19.5 x 32cm  
 Signed. Also inscribed on label verso

€ 50 - 100

180

J.H. AITKEN

Canal Side Buildings with Windmill  
Watercolour, 11.5 x 19cm  
Signed

€ 50 - 100



181

DAME LAURA KNIGHT (1877-1970)

Stratford

Pencil, 36 x 25cm

Signed and inscribed

*Provenance: Sothebys, Chester labels verso;  
together with a signed coloured print of a circus act by the  
same hand (2)*

€ 250 - 350

182

NEOPOLITAN SCHOOL, 19TH  
CENTURY

Classical Ruins with Figures "PESTO"

Gouche, 27 x 42cm

Inscribed with title

€ 500 - 700





LOT 183

183 AN EARLY 19TH CENTURY BRASS  
HEXAGONAL HALL LANTERN  
with bevelled glass plates and scroll supports. 46cm  
tall

€ 400 - 500

185 A BRASS FRAMED CIRCULAR CEILING  
LIGHT,  
with pierced brass body mounted with inverted finial  
and suspending three lights, each with domed acid  
engraved glass shades. Approximately 47cm diameter

€ 100 - 200

184 A VICTORIAN BRASS FENDER,  
and another;  
together with a set of brass fire irons.

€ 400 - 600

186 A VICTORIAN GILTWOOD AND GESSO  
OVERMANTLE MIRROR,  
19th century, with plain glass plates contained within  
arched moulded frames, 146 cm high, 150 cm wide

€ 400 - 600



187 J.G. SNAPE (19TH CENTURY)  
The Finishing Touch  
Oil on board, monochrome, 59 x 44cm  
Signed

€ 300 - 500



189 ENGLISH SCHOOL (19TH CENTURY)  
More Frightened than Hurt  
Oil on canvas, 29 x 24cm  
Inscribed with title

€ 200 - 300



188 L. BEINEZ (HUNGARIAN 20TH CENTURY)  
The Huntsman  
Oil on panel, 39 x 29cm  
Signed

€ 100 - 200



190 FRENCH SCHOOL (LATE 19TH CENTURY)  
Portrait of a Young Fashionable Woman  
Conte, 79 x 63cm

€ 300 - 500



191 BRITISH SCHOOL (19TH CENTURY)  
Shipping off a coastline  
Oil on canvas, 63.5 x 99cm  
Bears signature 'J.W. Carmichael and dated (18)62 lower left and 'C.  
Stanfield and dated (18)60 lower right

€ 2,000 - 3,000



192 A ROSEWOOD CASED BOUDOIR GRAND  
PIANO,  
by Beulhoff. 141 x 140cm

€ 2,000 - 4,000





193 SAMUEL JOHN EGBERT JONES (FL. 1820-1845)  
Crossing the stream  
Oil on canvas 63.5 x 76cm  
Signed and dated 1851 lower right

€ 3,000 - 5,000



194 AN EARLY 19TH CENTURY OAK FRAME  
COCK-FIGHTING CHAIR  
with overstuffed top rail and lyre back, padded seat  
and raised on turned tapering legs. 90cm tall

€ 1,200 - 1,600



195 A PAIR OF 19TH CENTURY TURKISH CANAKKALE EWERS, the mottled green earthenware with applied floral prunts and painted foliate sprays, one with a single c-scroll handle, the other with entwined handle. 40cm tall

€ 500 - 700

196 A 19TH CENTURY CHINESE TREFOIL SHAPED CARVED HARDWOOD STAND, with scalloped carved border and spreading shaped foot. 25cm diameter

€ 100 - 200



197 A CHINESE POWDER BLUE GROUND YEN YEN VASE, Kangxi, of flared baluster form, the tapering cylindrical neck decorated with courtesans and mountainous landscape, in famille verte enamels, the body with leaf and fan shaped reserves, filled with traditional Chinese depictions, on a circular undercut foot, 45cm high

€ 2,000 - 3,000

198 A CHINESE 'TOBACCO LEAF' PATTERN MEAT DISH, Qianlong period, 18th century, of shaped oval form, painted and enamelled in polychrome tones, within a raised border with wavy rim

€ 250 - 350



199 HENRY HARRIS LINES RBSA (1801-1889)  
'Bridgenorth', a busy riverside village scene with figures in boats and on the river bank  
Oil on canvas, 57 x 78cm

€ 2,000 - 3,000



200 AN IRISH MID-GEORGIAN DROP LEAF DINING TABLE,  
extending to oval form, the solid moulded top over an arched frieze and plain cabriole legs, ending with trefoil feet. 125cm wide x 148cm long (extended)

€ 2,000 - 3,000



201 A SET OF SIX GEORGE III STYLE MAHOGANY ELBOW CHAIRS IN THE CHIPPENDALE MANNER, with pierced splats on square tapering legs

€ 600 - 1,000

202 A MATCHED PAIR OF CONTINENTAL SIDE CHAIRS, with carved acanthus capitals and flat tied stretchers

€ 600 - 1,000



203 A REGENCY MAHOGANY AND UPHOLSTERED LIBRARY ARMCHAIR, the rectangular back and seat covered in a green floral fabric, supported on fluted tapering legs ending with brass castors

€ 500 - 800

204

A PAIR OF CHINESE EXPORT BLUE AND WHITE DISHES,  
18th century, decorated with bamboo and fence  
pattern to the central reserve; together with an octagonal  
example and another similar; together with two  
oblong dishes (6)

€ 300 - 500



205

A PAIR OF CHINESE BLUE AND WHITE  
EXPORT DISHES,  
18th/19th century, of shaped oval form, each painted  
with figures and pagodas in a mountainous landscape

€ 250 - 350

206

A HAND KNOTTED PERSIAN WOOL  
CARPET, 20TH CENTURY  
probably Tabriz, the large rectangular field woven in  
red and turquoise tones, with central medallion within  
multiple borders. 400 x 300cm

€ 800 - 1,200





207 A PAIR OF BELLEEK THIRD PERIOD ABERDEEN JUGS, 24cm high (2)

€ 200 - 400

210 A SET OF SEVEN SITZENDORF PORCELAIN FIGURES, depicting Henry VIII and his six wives, each modelled standing on a tilted oval base, factory marks verso. Each approx 21cm high

€ 800 - 1,200



209 A FRENCH POLYCHROME GLAZED FAIENCE POTTERY BASKET, of oval form with raised side handles and body with pierced panels to each side, centred with an oval vignette painted with classical landscape in puce, stamped with "St. Clément" and inscribed "Gallé Nancy" verso. 42cm across handles

€ 100 - 200



212 AN 18TH CENTURY CHELSEA-DERBY TITHE PIG BOCAGE GROUP, porcelain vignette, depicting the farmer and his wife giving one tenth of their produce to the parson, including their tenth child. 22cm high, 18cm wide

€ 400 - 600

213

A FRENCH NAPOLEAN III GILT BRONZE  
DESK STAND,

by Ferdinand Barbedienne, Paris, c.1870, the  
quatrefoil stand surmounted with a bust of Napoleon I,  
the surface decorated in bas relief with figures and an-  
imals and other motifs in the Grecian style, fitted with  
two large bulbous oval inkwells with blue glass liners  
and another inkwell, the entire raised on scroll bracket  
legs and paw feet, 49 x 30 x 30cm high; together with  
a matching paper knife in the form of a Greek sword,  
33 cm long. Stamped F. Barbedienne, FONDEUR, the  
paper knife also signed F. Levillian.

€ 800 - 1,200



214

AN ART DECO BRONZE MODEL  
OF A SEATED WOMAN WITH TWO  
HOUNDS,

modelled by C. Charles, raised on a rectangular  
stepped veined marble platform base. Signed;  
stamped 'Societe des Bronzes de Paris', 65cm wide

€ 1,500 - 2,000

215

AFTER COUSTEAU

A pair of bronze marley horses with attendants,  
51cm high

€ 1,000 - 1,500





LOT 217

216 A PAIR OF ART DECO STYLE FROSTED GLASS CEILING LIGHTS, of circular form with radial fluting and fitted with brass electrical fitting. Each 29cm diameter; together with a smaller example of similar design (3)

€ 500 - 700

217 A LARGE WATERFORD CUT GLASS TWELVE BRANCH CHANDELIER, with fluted central column issuing twelve scroll arm branches, arranged in two tiers, hung with rows of prismatic and facet cut lustres, joined by beaded chain swags, ending with a faceted globular finial. Approx. 95cm diameter, 104cm to suspension loop

€ 2,000 - 4,000





**218 A MURANO CLEAR AND COLOURED  
GLASS TWELVE-BRANCH  
CHANDELIER**

forming in three graduated tiers, with rows of feathery leaves and summer flowers over upscrolling candle arms, suspending rings with bellflower ornament and ending with blown ovoid finial approx. 107cm diameter, 156cm to suspension loop

€ 2,000 - 4,000



219 A LARGE CHINESE BLUE AND WHITE PORCELAIN OCTAGONAL JARDINIÈRE, decorated with geometric patterns. 44cm high

€ 300 - 500



221 A CHINESE PORCELAIN PUNCH BOWL, Qianlong, of deep circular form, decorated with pagodas and trees in a continuous landscape, 22.5 cm diameter

€ 300 - 500



220 A 19TH CENTURY BRASS CASED TRAVELLING MANTLE CLOCK, of rectangular form, 16cm to handle, surmounted with swing handle above a silvered overlaid panel enclosing a circular dial with Roman numerals, on outset plinth base, contained within a leather travelling box

€ 500 - 800



222 A CHINESE PORCELAIN PUNCH BOWL, 18th century, of circular form, painted and enamelled with chrysanthemums and rockwork with diaper banded border and floral spray to interior, 22.5cm diameter

€ 300 - 500



223

WALTER EMSLEY (1860 - 1938)

Portrait of a Lady, Jane Moore, Wife of Admiral Wolsley from a miniature painted by her sister

Oval oil on canvas 102 x 75.5cm

Signed and dated 1903 verso and with inscription "Jane Moore, wife of Admiral W. Wolsley from a miniature painted by her sister"

Provenance: Stephenstown House, Dundalk

€ 2000 - 3000



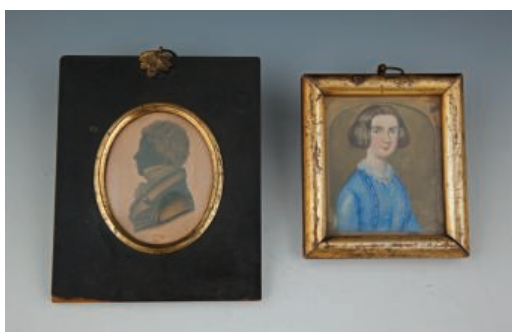
224 A PAIR OF CAST GILT BRASS TWO BRANCH WALL SCONCES, each of scrolling form, decorated with foliate design, central dragon head, fruiting vines etc., and converted for electricity, with later cream lamp shades decorated with an image of cupid (2)

€ 300 - 500



226 A KILLARNEY WORK RECTANGULAR WORK BOK.

€ 300 - 500



225 A VICTORIAN MINIATURE PORTRAIT OF A LADY IN A BLUE DRESS; together with a 19th century silhouette of a gentleman in ebonised and gilt frame (2)

€ 100 - 200



227 A MID 19TH CENTURY BLACK PAPIER MACHE AND MOTHER OF PEARL INLAID SERVING TRAY, with scrolling foliate and angel design, stamped Jennens & Bettridge, London. 73cm wide

€ 300 - 500



228 A VICTORIAN MAHOGANY BOOKCASE,  
the moulded cornice above three arched glazed panel doors enclosing shelves and raised  
on a conforming cupboard base. 221 x 260cm tall

€ 2,000 - 4,000



229 A 19TH CENTURY AND LATER OVAL HUNTING TABLE, with plain moulded double drop leaf top raised on square tapering legs. 298 x 176cm

€ 3,000 - 5,000

230 A SET OF 10 GEORGE III STYLE MAHOGANY DINING CHAIRS, in the Chippendale manner, the pierced vase shaped splats below carved crest rails with scallop terminals above upholstered drop in seats, raised on cabriole legs with claw and ball feet. (8 plus two carvers)

€ 2,000 - 4,000





231 A FINE GEORGE IV INLAID MAHOGANY BOWFRONT SIDEBOARD, profusely inlaid with trailing acanthus leaves, swags, rosettes and satinwood banding, with central frieze drawer and deep hidden drawer flanked by bowed panel door cupboards raised on turned tapering legs. 215 x 83cm

€ 3,000 - 5,000



232 A 19TH CENTURY ITALIAN MICRO MOSAIC MARBLE CHIP CROSS, within a brass frame, the white ground decorated with flowers, centred by a dove on a blue ground. 12 x 9cm

€ 300 - 500



234 A FRENCH BRONZE FIGURAL CANDLESTICK, modelled in the form of a classical girl holding aloft a torch and standing on a stepped and fluted circular foot, 50.5cm high

€ 200 - 300



233 A VICTORIAN 18 CARAT GOLD OPENFACE POCKET WATCH with glazed circular dial, inked with Roman numerals and featuring a second subsidiary, surmounted by suspended loop with key

€ 300 - 500



235 A FRENCH GILT BRONZE MODEL OF A DANCING LADY, the elegant figure with raised arms, balancing on one foot, raised on ovoid marble base. The entire 43cm high

€ 400 - 600





236 A VINTAGE LOUIS VUITTON LEATHER SUITCASE  
with single looped carriage handle, soft sides with monogrammed pattern, label to the interior. 64cm wide.  
€ 300 - 500



238 AFTER FREDRICK REMINGTON (AMERICAN 1861-1909)  
The Mountain Man  
Bronze, 28cm high  
€ 250 - 400



237 AN ANGLO INDIAN IVORY STATIONERY CASKET, 19TH CENTURY  
the slopefront timber top set with an oval cabochon, enclosing a compartmented sandalwood interior, the body with vertical ivory ribs inked with ropetwist borders.  
25cm wide  
€ 400 - 500



239 AFTER FRANZ XAVIER MESSERSCHMIDT (19TH CENTURY),  
a pair of patinated bronze busts of a laughing and wailing baby, each supported on simulated malachite columns and square outset base. 29cm high  
€ 500 - 700



240 AFTER PIERRE JULES MENE (20TH CENTURY)  
Study of a Hound, modelled standing on an oval naturalistic base, signed 'Mene'. 26cm high x 27cm long

€ 200 - 300



241 A PAIR OF 19TH CENTURY WHITE MARBLE COLUMNS,  
with square pedestal tops and cast gilt bronze collars,  
raised on stepped square bases. 116cm high

€ 1,000 - 1,500

242 A 19TH CENTURY FRENCH BRONZE FIGURE OF JUDITH STANDING BY THE HEAD OF HOLOFERNES,  
on rectangular plinth. Base 20cm high; together with a French 19th century bronze group depicting the Dying Gaul, after the antique. 16cm wide (2)

€ 200 - 300





243 CLAUDE MICHEL "CLAUDION" (1738-1814)  
Two satyrs dancing with a girl, (a group), bronze, raised on a circular white marble pedestal. 68cm tall  
€ 3,000 - 5,000

244 FRENCH SCHOOL (19TH CENTURY)  
A pair of seated putti, one with a tamborine, raised on tapering fluted marble socle with applied ormolu cast foliate swags, bronze. 42cm tall

€ 2,000 - 4,000





247      ATTRIBUTED TO PHILIP JAMES DE  
LOUTHERBOURG (1740-1812)  
Figures Beaching Boats in a Stormy Coastal Landscape  
Oil on canvas, 90 x 141cm

€ 3,000 - 5,000



246      HENRY MORNEWICK (FL.1827-  
1846)  
A Pilot Cutter hard to Windward  
Watercolour, 37.75 x 49.5cm  
Signed

€ 300 - 500



248      CONTINENTAL SCHOOL  
Marine scene with Fishing Boats in choppy seas  
Oil on canvas, 44 x 56cm

€ 300 - 400



249 A FINE FRENCH GILTWOOD OVERMANTLE MIRROR, 19TH CENTURY,  
of upright rectangular form, fitted with shaped  
bevelled glass plate beneath ribbon ties, acanthus and floral groups flanked by urns to either side,  
contained within a border of stuffed leaves and spiral ribbon ornament. 202cm high x 121cm wide

€ 2,000 - 3,000

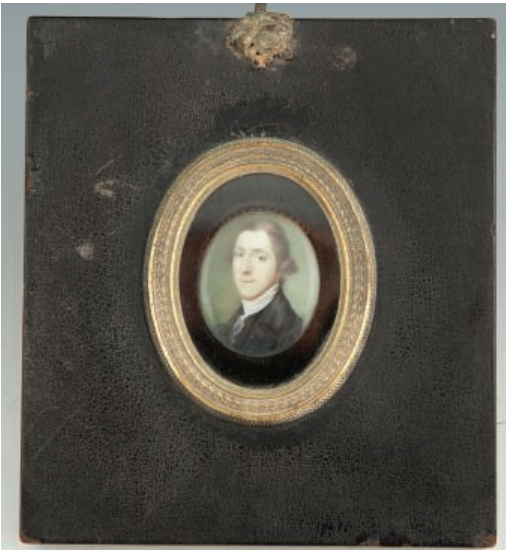


250 A CHINESE WOOL RUG,  
the blue ground decorated with flying cranes on a  
blue ground. 182 x 130cm

€ 100 - 200

252 IRISH SCHOOL, 18TH CENTURY  
Miniature Portrait of a Gentleman  
Oil on ivory, monochrome, 2.25 x 2cm  
Contained within ebonised circular frame; together  
with a 19th century miniature portrait of a lady, simi-  
larly framed (2)

€ 200 - 300



251 IRISH SCHOOL, C.1800  
Portrait of a Gentleman  
Oil on ivory, miniature, 4 X 3.5cm  
Contained within an ebonised and gilt metal frame

€ 250 - 350



253 A COLLECTION OF SEVEN 19TH CENTURY  
SILHOUETTES  
and miniature watercolour portraits, relating to the  
Galbraiths, Galway and Elizabeth and George Milsom  
(7)

€ 100 - 200



254 AN IRISH REGENCY CUT GLASS CENTRE BOWL,  
of stepped circular form, with serrated rim and tapering hemispherical body on a spreading star-cut base, 24cm diameter

€ 300 - 500



256 A LARGE ETCHED AND CUT GLASS PEACOCK VASE,  
c.1890, of ovoid form decorated with birds amongst fruiting vines and foliage on a knopped stem and a circular disc foot, 36cm high

€ 200 - 400

255 AN IRISH FLAT-CUT NAVETTE SHAPED GLASS FRUIT BOWL,  
either Waterford or Cork, late 18th century, on baluster turned support, with lobed moulded base  
28cm high, 39cm wide

€ 2,500 - 3,500





257 A VICTORIAN MAHOGANY FRAMED CHEVAL GLASS,  
the rectangular moulded frame raised on scroll side supports, with platform base and scroll feet with castors. 157cm tall

€ 600 - 900



258 A GEORGE II MAHOGANY RECTANGULAR FOLDING TOP TABLE,  
with deep plain frieze, above rear square supports with gate mechanism and front round tapering supports on pad feet, 72cm high, 73 wide (69cm wide when open)

€ 500 - 800



259 A 19TH CENTURY STYLE STAINED WOOD AND BRASS MOUNTED HAT AND COAT STAND,  
with applied triform scroll arms on a fluted and spiral turned column, on a shaped triangular platform base and paw feet. 190cm high

€ 250 - 350





260 SAMUEL SPODE (1798-1872)  
 'Gladiateur', a bay horse in a paddock  
 Oil on canvas, 51 x 61cm  
 Signed lower left, and inscribed 'Gladiateur' lower  
 centre

€ 1,000 - 2,000

261 A REGENCY ROSEWOOD AND  
 BRASS INLAID BREAKFRONT SIDE  
 CABINET,  
 fitted with faux marble top above four brass grill panel  
 doors enclosing a shelved interior, on gilded lion paw  
 feet. 181cm wide

€ 2,000 - 3,000





263 A GILTWOOD NEO CLASSICAL PLASTER AND GESSO PELMET, with bellflower swags and ribbon and reeded decoration. 255cm wide

€ 400 - 600

262 AN EARLY GEORGE III MAHOGANY SMALL BREAKFRONT BOOKCASE, with dentil frieze above square glazed doors, on conforming outset base with relief panelled doors, on a full plinth carved with a running bell-flower frieze. 212cm high x 147cm wide x 46cm deep

€ 2,500 - 3,500



264 A FINE IRISH GEORGE III MAHOGANY SECRETAIRE CHINA CABINET, the moulded dentil cornice with a detailed frieze above two oval inlaid glazed doors with shelves above a long fitted secretaire drawer with two rectangular doors with oval inlaid panels and raised on bracket feet (c.1775), 231 cm high, 127cm wide, 56cm deep

€ 1,500 - 2,500



265 A SET OF SIX IRISH REGENCY DINING CHAIRS, each with curved tablet backs, all over reeded decoration embellished with turned roundels, with upholstered drop-in seats and raised on sabre legs. (6)

€ 500 - 800



267 AN EDWARDIAN POLYCHROME PAINTED SATINWOOD PIER TABLE, in the Georgian Style, the crossbanded top with painted foliate swags, above a conforming frieze and raised on inlaid tapering supports. 79 x 118cm

€ 300 - 500



266 A GEORGE III DEMI-LUNE INLAID SATINWOOD CARD TABLE, the crossbanded top set with inlaid sunburst fan and foliage, opening to reveal a baize lined interior, over a panel frieze inlaid with scrolling foliage on tapering supports. 78 x 106cm

€ 400 - 600



268 AN EDWARDIAN MAHOGANY D-END ECONOMY DINING TABLE, comprising two crossbanded and inlaid demi-lune ends, with single drop leaf centre, raised on narrow square tapering legs.

€ 1,000 - 1,500



270 A GEORGIAN STYLE MAHOGANY RECTANGULAR CARD TABLE, on square tapering legs. 90cm wide

€ 200 - 400

269 A SET OF SEVEN HEPPLEWHITE STYLE MAHOGANY DINING CHAIRS, comprising two carvers and five single chairs, each with arched back, pierced vase shaped splat above green upholstered drop in seat and raised on square supports. (7)

€ 600 - 1,000



271 ENGLISH SCHOOL (LATE 18TH CENTURY),  
ATTRIBUTED TO THOMAS LUNY  
Boats landing by a shore, with figures in the fore-  
ground  
Gouache, monochrome, 22 x 34cm

€ 300 - 500



274 19TH CENTURY SCHOOL  
Ruins by a river in a wooded landscape  
Oil on canvas, 35.5 x 52cm

€ 100 - 200



272 G. CERYTHI (LATE 19TH  
CENTURY)  
St Augustine a Naples  
Watercolour, 37 x 55cm  
Signed and inscribed with title

€ 400 - 600



275 LOUIS VAN STATEN (1836-1909)  
Continental river town  
Watercolour, 40 x 60 cm  
Signed

€ 300 - 500



273 FRANK BRANGWYN (1867-1956)  
Browning's House, Venice  
Etching, 70 x 45.5cm  
Signed

€ 200 - 300



276 EDWARD HAGRITT (1835-1895)  
After a Shower in the Highlands  
Watercolour, 36 x 58 cm  
Signed

€ 300 - 500



277 CONTINENTAL SCHOOL (LATE 19TH CENTURY)  
Eastern Scenes  
Watercolour, a pair, 24 x 59.5cm  
Signed

€ 500 - 800



279 UTAGAWA KUNISADA (JAPANESE 19TH CENTURY)  
A set of four coloured woodblock prints depicting figures in a garden setting, each approx. 36 x 25cm

€ 400 - 600



278 SEAMUS O'COLMÁIN  
Low Tide Erre Lough  
Oil on board, 31 x 38.5cm  
Signed  
*Provenance: The Ritchie Hendriks Gallery, Dublin*

€ 300 - 500



280 ENGLISH SCHOOL (EARLY 19TH CENTURY)  
A horse standing by a river with boat and distant rainbow  
Oil on panel, 12.5 x 18cm  
Signed indistinctly

€ 300 - 500



281 AN EDWARDIAN COMPOSITION GILT COMPARTMENTED WALL MIRROR, in the Adam Style, c.1900, fitted with central oval glass plate contained within a border of trailing bellflowers, surrounded by four compartmented plates, the outer border with inverted corners. 79.5 x 70cm

€ 400 - 600



283 A FRENCH KINGWOOD AND GILT METAL MOUNTED WALL MIRROR, 19TH CENTURY, of cartouche form, the shaped bevelled glass plate within an alternating veneered border and surmounted by a group of classical figures. 93cm long, 69cm wide

€ 400 - 600



282 A WILLIAM IV MAHOGANY PEDESTAL CELLARETTE, the plain moulded top above a fielded panel door enclosing three bottle racks, on shallow bracket feet, stamped with registration number D9492

€ 300 - 500



284 A SMALL VICTORIAN MAHOGANY RECTANGULAR OPEN FRONT BOOKCASE, the triangular pediment back above three open shelves and platform base, 90cm wide

€ 400 - 600





285 JOHANNES FREDERICK HULK THE ELDER  
(DUTCH, 1829-1911)  
Dutch Riverside Town Scenes  
A pair, oil on canvas, 51 x 81cm  
One signed and dated 1867 lower left

€ 6,000 - 8,000



286 A PAIR OF 19TH CENTURY WHITE PAINTED AND PARCEL GILT FIRE SURROUNDS,  
ca. 1850, each with bowed ledge above a frieze decorated with central scallop shell and acanthus carved angled corners,  
over conforming upright supports, 174 cm wide, 143 cm high

€ 1,000 - 1,500



287 AFTER ANTONIO CANOVA (ITALIAN, 1757-1822)  
A 19th century carved alabaster group depicting the Penitent "Magdalene", modelled downcast in kneeling position with a skull by her side, 41cm high together with a later white painted timber pedestal. 85cm high

€ 800 - 1,200



289 A PAIR OF EDWARDIAN MAHOGANY PEDESTALS,  
with carved leaf banded border above a frieze drawer and single cupboard door, raised on bracket feet. 60 x 122cm

€ 800 - 1,200



288 A VICTORIAN ROSEWOOD WORK BOX,  
of sarcophagus form, with fitted interior, raised on turned centrepillar and quadruped base. 49cm wide

€ 600 - 800



290 AFTER JAMES MALTON,  
Powerscourt Town House, Dublin  
Framed colour print, 30 x 40cm

€ 150 - 250



291 A GEORGE IV MAHOGANY RECTANGULAR WORK TABLE, the plain top above a single frieze drawer and a pleated silk sliding well, raised on turned ringed column legs. 51.5 x 40.5cm

€ 300 - 400



292 A MAHOGANY AND PARCEL GILT MIRROR FRAME, the frame of architectural form, with fluted Corinthian columns, 194cm high, 134cm wide

€ 500 - 800



293 A FRENCH FLAME MAHOGANY CONSOLE TABLE, the veined marble top over single frieze drawer, above out-scrolling supports terminating in paw feet, with mirror panel back and inverted concave base. 97cm wide

€ 800 - 1,200



294 AN IRISH GEORGE III MAHOGANY AND BRASS BOUND TURF BUCKET, c.1800, with brass swing handle, 35cm diameter

€ 1,000 - 1,500



296 A GEORGE III MAHOGANY COMPACT TALLBOY CHEST, with stepped moulded cornice above six long graduated drawers, each fitted with twin brass drop handles, and raised on bracket feet. 138.5cm high x 82.5cm x 37.5cm deep

€ 500 - 800



295 A CHINESE CARVED CHERRYWOOD AND ROUGE MARBLE JARDINIÈRE STAND, c. 1900, the circular top over pierced frieze panels on short scroll legs, 48cm high

€ 200 - 300



297 A VICTORIAN MAHOGANY TWO TIER DUMB WAITER, of rectangular form, with two graduated levels on trestle end supports, raised on bun feet. 119cm high x 107cm wide

€ 150 - 250



298 EDWARD CHARLES WILLIAMS (1807-1881)  
'Filling the Water Barrel'  
Oil on canvas, 56 x 79cm

€ 2,000 - 3,000



299 AN IRISH REGENCY MAHOGANY OCTAGONAL CENTRE TABLE,  
the crossbanded top with gadroon border supported on a squared tapering centre column and  
concave platform base. 98cm diameter

€ 600 - 800



300 AFTER ESTABAN MURILLO (1617-1682)  
Boys Eating Grapes and Melon *and*  
Boys Eating Fruit with Hound  
A pair, oil on zinc panel, 19.5 x 16cm  
Signed

€ 300 - 400



302 ITALIAN SCHOOL (19TH CENTURY)  
Classical Figure Study  
Graphite sketch, 39 x 50cm

€ 300 - 400



301 AFTER WILLIAM AND THOMAS DANIEILL (18TH CENTURY)  
The Chaless Sotuu, View of Mutura, Mausoleum of  
Kausim Solemanee, Lucnow from the River Goomty  
and Mosque Gate, Pilibeat  
A set of five colour reproduction prints, 44 x 58cm (5)

€ 300 - 500



303 IRISH SCHOOL (EARLY 20TH CENTURY)  
A still life, yellow roses  
Oil on canvas laid on board, 39 x 29cm

€ 300 - 500



304 CECIL JAMESON (EARLY 20TH CENTURY)  
A half length portrait of a gentleman dressed in Scottish attire  
Oil on canvas, 76 x 63½cm  
Signed upper left  
*Note: Jameson exhibited in the RHA, the Royal Academy and the Royal Glasgow Society*

€ 500 - 800



306 B.B. WADHAM (EARLY 20TH CENTURY)  
A turf cutting scene  
Oil on canvas, 30 x 46cm  
Signed lower left

€ 300 - 500



305 CHARLES DELFAUER (19TH CENTURY)  
An extensive lake and mountain landscape with figures and pleasure boats  
Oil on canvas, 110 x 158cm  
Signed

Provenance: Sale Christies, London, October 1990, Lot 42

€ 2,500 - 4,000



307 IRISH SCHOOL (C.1820)  
Portrait of a Gentleman  
Oil on board, 12 x 9.5cm, contained in black and gilt decorated frame

€ 150 - 250



308 AN ENGLISH 18TH CENTURY PORCELAIN TEA CADDY, decorated with chinoiserie panels against a rich blue and gilt ground, marked with monogram 'ARK'

€ 50 - 80



310 A PAIR OF SILVER MOUNTED CUT GLASS SHIPS DECANTERS, each fitted with globular stoppers cut with flutes and lozenges, the silver collars dated Birmingham 1952. 28cm high

€ 250 - 350



309 A GILTMETAL AND TURQUOISE MOUNTED PENDANT SCENT BOTTLE, 19th century; together with a Tibetan bone and jewelled example and a Chinese enameled porcelain scent bottle of flattened oval form, and a Chinese enameled scent bottle of tapering cylindrical form (4)

€ 300 - 400



311 A SILVER MOUNTED CUT GLASS DECANTER AND STOPPER, of lozenge shape with flute and diamond pattern, fitted with a facet-cut stopper, the silver collar hall-marked Birmingham 1935

€ 100 - 200





312 PABLO PICASSO (1881-1973)  
Têtes (Heads)  
Turned ceramic pitcher, 14cm high  
Signed 'Edition Picasso' and stamped 'EDITION  
PICASSO' and 'Madoura Plein Feu' on the base  
€ 2,000 - 3,000



314 AN EARLY 19TH CENTURY BLOOR DERBY  
CHINA DESSERT SERVICE,  
comprising:  
17 dessert plates  
3 scallop shaped serving dishes  
2 oval serving dishes  
4 shaped square serving dishes  
the white ground decorated with central reserves of  
wild flower bouquets with flower heads to the outer  
border and gilt banding (26)

€ 400 - 600



313 A LARGE DOULTON AND SLATERS  
POLYCHROME GLAZED EARTHENWARE  
VASE C.1900 ,  
with moulded wavy rim decorated in green and beige  
tones with scattered flowers over a band of stiff leaves,  
impressed factory mark, 71cm high

€ 600 - 1,000



315 A FRENCH BEECHWOOD CROSSBANDED AND MARQUETRY INLAID WORKTABLE, raised on four turned columns, joined by cross framed stretcher. 39 x 53cm

€ 300 - 500



317 A VICTORIAN PAINTED MARBLE TOP CIRCULAR CENTER TABLE. Decorated with a painted central reserve, and raised on a mahogany Empire style base with three column support and triangular platform base.

€ 400 - 600



316 A REGENCY BLACK & GILT DECORATED RECTANGULAR COMPARTMENTED OVER MANTLE MIRROR, with moulded cornice above a frieze decorated in bas relief with figures and lion-drawn chariot, flanked by reeded pillasters and raised on shallow platform base. 89.5cm high, 148.5cm

€ 600 - 1,000



318 A PAIR OF FRENCH MAHOGANY AND BRASS MOUNTED SALON CHAIRS, each with rectangular backs, mounted with leafy finials and three fluted column supports, on padded bow-front seat, and raised on turned tapering legs

€ 200 - 400



319 A PAIR OF FRENCH BRONZE FIGURES OF FALCONERS,  
19th century, each in standing position, each with raised birds, on circular base and marble plinth bases, the bronze 31cm high, marble base 17cm high

€ 1,000 - 1,500

320 AFTER DENIERE,  
French 19th century, A pair of bronze figures of male and female harvesters, each modelled standing barefoot on a naturalistic base, signed, 46cm high and 43cm high

€ 1,500 - 2,500



321 A FRENCH GILT BRONZE ENCRIER IN THE LOUIS XV STYLE,  
late 19th century, by Maison Millet à Paris, the shaped dish formed by leaf scrolls having twin hinged ink wells with foliate finials, stamped to the side 'Millet, Paris'.  
28.5 x 18cm

€ 300 - 500





322 A SET OF SIX MAHOGANY FRAMED DINING CHAIRS  
in the hepplewhite taste with original leather seats

€ 200 - 300



323 A PAIR OF VICTORIAN PAPIER MACHE FRAMED SALON CHAIRS,  
each bearing oval plaques inscribed 'T.H. JENNENS  
PATENTEE, LONDON', mid 19th century, the frames  
painted with floral decoration and having mother of  
pearl inlay, with caned seats above turned front legs,  
each 83cm high

€ 150 - 250



325 A 19TH CENTURY STAINED WOOD BOOKPRESS,  
with turned wooden screw, with acorn finial, raised  
on a table base, with frieze drawer on square tapering  
legs. 72cm wide

€ 300 - 500



324 A GEORGE III OAK LONGCASE CLOCK,  
the hood with swan neck pediment and fluted columns  
enclosing a brass dial inscribed T.M. Chesterfield,  
raised on a waisted case with a single door and fluted  
pillasters. 220cm tall

€ 500 - 800



326

A 19TH CENTURY MAHOGANY RECTANGULAR BREAKFRONT BOOKCASE IN THE CHINESE CHIPPENDALE TASTE,

the moulded cornice with blind fret frieze above three astragal glazed panel doors on a table base with pierced fretwork on piered square angled legs. 170cm wide, 220cm high, 50cm deep

*Provenance: This bookcase was inherited from the Estate of Irish revolutionary, barrister, politician and judge Fionán Lynch (1889 -1966). Lynch was a friend of Michael Collins and fought alongside him and the Irish Volunteers in the 1916 Rising. Lynch was one of five secretaries to the signing of the Anglo-Irish Treaty.*

€ 1,500 - 2,000



327 AN EDWARDIAN ROSEWOOD AND MARQUETRY INLAID CHIFFONIER, c.1900, having architectural cornice above twin bevelled mirror doors and shelving space, the lower section with inlaid cupboard door flanked by angled corner shelves on short ring turned supports. 106cm wide x 184cm high

€ 300 - 400



329 A VICTORIAN TUNBRIDGE-WARE INLAID WALNUT WORKTABLE, the hinged lift top inlaid with parquetry games board, enclosing a fitted interior, on tapering panelled column and triform base. 47cm diameter

€ 200 - 300



328 AN IRISH 19TH CENTURY MAHOGANY COMPACT BOOKCASE, probably by Butler of Dublin, with moulded dentil cornice above gothic lancet glazed panel door enclosing adjustable shelves, on a chest of four long graduated drawers and bracket feet. 70cm wide x 182cm high

€ 500 - 700



330 AN IRISH 19TH CENTURY MAHOGANY LOWBOY, by Butler of Dublin, in early Georgian style, the moulded rectangular top above one long and two short drawers, wavy apron, supported on turned legs and cross frame stretcher. 77cm wide

€ 700 - 1,000



331 A MID 19TH CENTURY ROSEWOOD AND SATINWOOD INLAID CHESS TABLE, of octagonal form, the moulded top on spiral turned centre column and double scroll triform base. 52cm diameter



332 A GEORGIAN REVIVAL MAHOGANY BOOKCASE, c.1900, in the Chinese Chippendale taste, surmounted with broken swan neck cornice above twin honeycomb astragal glazed doors, enclosing a shelved interior, over two blind fretwork drawers and raised on slender cabriole legs. 76cm wide x 202cm high

333 A REGENCY ROSEWOOD SIDE CABINET, of rectangular form, with moulded top above a single pulvinated drawer and twin mirror cupboard doors between carved acanthus mounts on fluted bun feet

€ 600 - 800

€ 500 - 700





334 AN IRISH MAHOGANY COMPACT WARDROBE,  
by James Hicks, stamped 5 Lwr Pembroke St., Dublin,  
the plain fitted cornice above twin fielded panel  
doors, between fluted angled corners, supported on  
a conforming base with chamfered legs and block feet,  
184cm high, 107cm wide

€ 600 - 1,000



335 A PAIR OF VICTORIAN CAST IRON GARDEN  
URNS  
of baluster from the floral rims and fluted bodies on  
square bases. 52cm tall

€ 1,000 - 1,500

336

A 19TH CENTURY BRONZE AND GILT  
DECORATED TRIFORM STAND,  
in Baroque style, each side cast with a female mask  
above panels of Latin text and held aloft by twin cher-  
ubs, on a band of continuous Greek key decoration.  
30cm high x 39cm wide

€ 500 - 700



337

A GEORGE IV INLAID MAHOGANY  
UPRIGHT SECRETAIRE  
BOOKCASE  
with moulded cornice above twin astragal glazed  
panel doors on a fall front base, enclosing a well fitted  
interior above three long cockbeaded drawers with  
brass drop handles, raised on bracket feet. 91cm wide,  
136cm high

€ 800 - 1,200





338 A LATE 19TH CENTURY BRASS FRAMED RECTANGULAR HALL LANTERN, with leaded coloured glass panels and single hinged door. 19.5cm wide x 55.5cm high, including supports

€ 200 - 400



340 WILLIAM CARROLL (IRISH, C. 1800)

Portrait of Thomas Addis Emmett

Pastel, 25.5 x 21.5cm

Bearing inscription verso: "Thomas Addis Emmett by William O'Carroll, 57 Henry St. Dublin"

T.A. Emmett, 1764-1827, Lawyer, United Irishman and brother to Robert Emmet. He went into exile in Belgium and France before going to America where he had a successful legal and political career. A friend of Thomas Payne, he wrote a biography of his brother.

€ 1,500 - 2,000



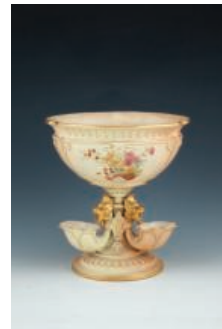
339 AN EARLY 20TH CENTURY BRASS FRAMED RECTANGULAR HALL LANTERN, with leaded colour and clear glass panels. 17cm wide x 49cm high including supports

€ 200 - 400



342 A SET OF FIVE COPELAND PORCELAIN DESSERT PLATES, 1903, the white ground within a gilded moulded border, having swags of blue cornflowers and leaves, each signed Kate Bruce, Age 76 and dated 1903. 22cm diameter

€ 120 - 180



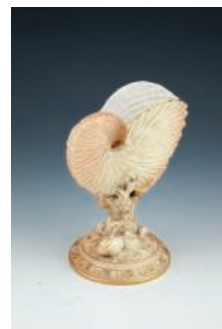
345 A ROYAL WORCESTER BLUSH PORCELAIN CIRCULAR FLOWER BOWL, the shaped circular bowl with three panels of flower sprays on a pedestal base fitted with three spill vases and lions masks on a circular platform with gilt rim, No.1713, Reg No.227397. 20.4cm diameter x 22cm high

€ 500 - 800



343 A LATE 19TH CENTURY GERMAN PORCELAIN CABINET CUP AND SAUCER, of twisted shaped circular tapering form; together with a late 19th century French porcelain cabinet cup and saucer, Utzschneider, Lorraine marks, c.1890 (2)

€ 60 - 120



346 A ROYAL WORCESTER PORCELAIN BLUSH NAUTILUS SHELL VASE, supported in a coral branch on a circular base with sea shells and gilded rim. 21cm high

€ 200 - 300



344 A PAIR OF ROYAL WORCESTER PORCELAIN CIRCULAR TAZZAS, and a pair of matching circular plates, the celadon green ground with floral spray, birds and insects within a gilded beaded border and raised on circular base and three scroll feet. 23.5cm diameter (4)

€ 200 - 300



347 A PAIR OF ROYAL WORCESTER PORCELAIN BLUSH LOBED CIRCULAR BALUSTER VASES, with slender necks, the panels decorated with moulded flowers and alternating floral sprays and raised on rim foot with gilded base. No.859. 28cm high (both with repairs to the neck) (2)

€ 200 - 300



348 A ROYAL WORCESTER PORCELAIN BLUSH BASKET-WEAVE 'LIZARD JUG', of circular baluster form, with tied twig handle and decorated with a climbing salamander. No.1714, Reg No.226402. 15cm high

€ 250 - 350



350 A COLLECTION OF THREE ROYAL WORCESTER PORCELAIN FLAT BACK JUGS, two ivory and one blush, in graduated sizes, with gilded handles, the bodies variously decorated with floral sprays. 18.2, 16.5 and 14.5cm high. No. 1094, reg no. 29115 (3)

€ 300 - 400



349 A ROYAL WORCESTER PORCELAIN BLUSH MINIATURE VASE OF CIRCULAR BALUSTER FORM with cast mask handles, painted with floral sprays and raised on square platform base no. 1716, reg no. 227400. 21cm high and another similar vase. 19.5cm high (2)

€ 250 - 350



351 A ROYAL WORCESTER PORCELAIN CLARET JUG, of circular tapering form, the ivory ground decorated with painted and gilded birds and with gilded moulded foliage and twig handle. No.1047, Reg No.17049. 20cm high

€ 150 - 200



352 A ROYAL WORCESTER PORCELAIN BLUSH LOBED CIRCULAR JUG with gilded coral handle, painted with polychrome foliate sprays no. 1507. 16cm high; together with an ivory butter shell with gilded rim and foliate sprays. 14cm wide (2)

€ 120 - 180



353 A ROYAL WORCESTER PORCELAIN COVERED BOWL, of lobed circular form, the ivory ground with polychrome floral sprays and with gilded finial and banded base. 15.5cm diameter

€ 60 - 80



354 A ROYAL WORCESTER PORCELAIN CIRCULAR TAPERING VASE, with twin gilded handles, the ivory ground decorated with sprays of polychrome flowers. Impressed No.1077. 28cm high

€ 150 - 200



355 A ROYAL WORCESTER PORCELAIN BLUSH TWO HANDED VASE, of circular baluster form with twin handles and moulded mid-Eastern style neck, the bulbous body decorated with ferns and raised on spreading foot. No. 1034, reg no. 14192. 29cm high

€ 300 - 500



356 A 19TH CENTURY PALE BLUE AND RED ARABESQUE DECORATED CIRCULAR BALUSTER VASE OIL TABLE LAMP, with gilt highlights and raised on Chinese brass circular base. 44cm high, now adapted for electricity

€ 150 - 250



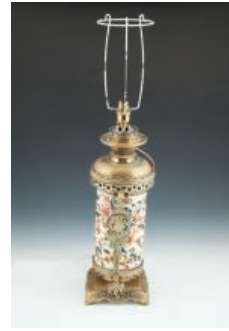
357 A ROYAL WORCESTER PORCELAIN BLUSH BAMBOO ROSE JAR AND COVER, with twin gilded handles and decorated with foliate sprays, no.1326, reg no.114300. 12.5cm diameter; together with a similar ivory gilt rose jar and cover. (2)

€ 100 - 150



358 A ROYAL WORCESTER POLYCHROME PORCELAIN FANTASTICAL SEA SHELL VASE surmounted with a green dragon and raised on a sea shell strewn base; a globular vase in the Japanese taste with twin gilded handles and raised on three ball feet; together with a single Royal Worcester 'Drumstick Vase', the ivory ground with foliate sprays, no.1215. 16.5cm high

€ 200 - 300



360 A 19TH CENTURY GLAZED CERAMIC CYLINDRICAL COLUMN OIL TABLE LAMP, contained in a Chinese cast brass frame and raised on shaped square pierced platform base, now adapted for electricity. 42cm high

€ 150 - 250



359 A PAIR OF ROYAL DOULTON PORCELAIN CIRCULAR BALUSTER VASES, the green ground decorated with painted foliate panels and with gilded sprays, each with twin scroll handles and raised on pedestal foot. 22.8cm high; together with an English porcelain green and yellow square cake plate, three pieces of Victorian cranberry glass and a modern Belleek cream jug and sucrier. (8)

€ 250 - 400



361 A 19TH CENTURY PAINTED PORCELAIN CIRCULAR BALUSTER OIL TABLE LAMP, decorated with oval panels of storks in wetlands and raised on spreading base on brass feet. 40cm high, now adapted for electricity

€ 150 - 250



362 A ROYAL WORCESTER PORCELAIN BLUSH BAMBOO PATTERN DOUBLE OPEN ENDED BASKET.  
No. 858. 14cm high x 25cm long

€ 80 - 120



364 A BELLEEK FIRST PERIOD GRASS PATTERN QUATREFOIL TRAY,  
the reserve with basket weave pattern, with black stamp, also impressed with 'Belleek, Co. Fermanagh'.  
42.5 x 34.5cm

€ 100 - 200



363 A BELLEEK FIRST PERIOD THORN PATTERN SHAPED SQUARE TRAY,  
with pink and gilt highlights, centred with a spider in a web, impressed mark with 'No.12' inscribed below, also with two impressed design registration marks.  
37 x 37cm

€ 150 - 200



365 A BELLEEK SECOND PERIOD CELTIC PATTERN OVAL TRAY,  
with black stamp. 42 x 36cm

€ 300 - 500



366 A BELLEEK FIRST PERIOD NEPTUNE PATTERN TRAY, with pink tinted rim, with black stamp and impressed mark. 36 x 38cm

€ 300 - 500



367 A BELLEEK FIRST PERIOD POLYCHROME PAINTED AND GLAZED PARIAN TULIP VASE, large size, with a black stamp and impressed mark. 33cm high

€ 2,000 - 3,000



368 A BELLEEK SECOND PERIOD GRASS TEAWARE HONEY POT ON STAND, in the form of a domed beehive on a rustic platform base, with a black stamp. 15cm high  
€ 400 - 500



369 A GEORGE IV MAHOGANY AND ROSEWOOD CROSSBANDED TEAPOY, c.1820, of rectangular form with canted corners, the hinged top enclosing a fitted compartmented interior, on panelled centre column and concave platform base. 49cm wide

€ 700 - 1,000



370 A FRENCH KINGWOOD CROSSBANDED AND MARQUETRY INLAID OVAL OCCASIONAL TABLE, raised on cabriole legs and terminating with brass mounts

€ 300 - 500



371 A PAIR OF CHINESE CARVED HARDWOOD SIDE CHAIRS, early 20th Century, each with pierced backs profusely carved with flowers, birds, bats and dragons, above panelled seats raised on carved supports and H - stretcher, each 101cm high

€ 800 - 1,200





372 A FINE ART DECO AMBOYNA EXTENDING DINING TABLE, c.1930, following a design by Ray Hille, the figured top with canted corners, on concave plinth support and outset block feet, with two extension leaves, 205cm long, 99cm wide

€ 2,500 - 4,000



373 A SET OF TWELVE ART DECO WALNUT FRAMED AND LEATHER UPHOLSTERED TUB BACK DINING CHAIRS, each with raised upholstered back and padded seat on tapering and splayed supports

€ 2,000 - 3,000



375 A SET OF SIX 19TH CENTURY STAINED OAK FRAMED DINING CHAIRS,  
the rectangular panel backs and seats covered with mustard coloured hide  
with brass studs and raised on turned and blocked legs and cross-stretchers.  
(Two elbow & 4 side chairs).

€ 400 - 600



376 AN IRISH MAHOGANY OPEN ARMCHAIR,  
c. 1770 with shell eared crest rails, open trellis splat inscrolled arms,  
the seat upholstered in old brown hide on square grooved legs with  
fret-work brackets

€ 300 - 500



- 377 A GEORGIAN REVIVAL WHITE PAINTED TIMBER FIRE SURROUND, late 19th century, with moulded ledge above a frieze centred with an urn  
€ 500 - 800

- 378 A VICTORIAN MAHOGANY AND UPHOLSTERED NURSING CHAIR, mid 19th century, the padded rectangular back with outset leaf carved corners, and stuffed seat on spiral turned supports and brass castors  
€ 400 - 500

- 379 A PAIR OF REGENCY ROSEWOOD FRAMED POLE SCREENS, c.1820, converted to standard lamps, each with adjustable tapestry panel, on a brass tubular column and concave platform base. 160cm high to light fitting  
€ 500 - 700





380 A VICTORIAN MAHOGANY RECTANGULAR BREAKFRONT SIDE CABINET with arched panel back, the twin mirror doors flanked by octagonal columns and raised on platform base. 146cm wide, 107cm high, 57cm deep

€ 600 - 800



381 A VICTORIAN GILTWOOD OVERMANTLE MIRROR, MID 19TH CENTURY, of architectural form, the shaped glass plate within an arched frame and flanked by turned fluted pilasters, carved with leafy capitals over incised plinth supports. 175cm high x 142cm wide

€ 800 - 1,200



382 AN INLAID MAHOGANY AND SATINWOOD BOWED BREAKFRONT SIDEBOARD, IRISH, C.1790, with three-quarter gallery, the frieze with central drawer flanked by cupboards on square tapering legs with raised banding, inlaid overall with paterae and ribbon tied husk pendants, (the gallery, drawer and some inlay later). 232cm wide x 84cm deep x 112cm high

*Provenance: St. Anne's, Clontarf*

€ 1,000 - 1,500



383 A GEORGE III INLAID MAHOGANY RECTANGULAR TALL BOY CHEST  
of two short and eight long graduated drawers with boxwood stringing and brass oval handles having cornice with dentil moulding and raised on bracket feet. 113 x 54cm

€ 500 - 800



384 AN EARLY 20TH CENTURY KASHAN WOOL RUG,  
Central Persia c. 1930, the deep crimson rectangular field woven with scrolling foliate  
decoration, enclosing a navy, cream and blue floral designed medallion, this central field  
contained within a broad border of interlinked anthemion designs, swags, and scrolling  
foliage, finely knotted, good condition. 320cm wide

*Provenance: Sourced by Peter Linden for an Irish Collector c.1980, where it has been well pre-  
served to the present day*

€ 2,000 - 3,000



385 AN ANTIQUE GENDJE RUNNER,  
c. 1880-1900, North Western Azerbaijan, with geometric  
boteh design within multiple border and guard stripes,  
327 x 100cm

€ 1,500 - 2,000



386 A GEORGE I CARVED GILTWOOD SIDE TABLE IN THE MANNER OF BENJAMIN GOODISON, the red marble top with thumb moulded rim above a flat carved apron centred by a human mask depicting Diana, flanked by scrolls, the leg terminals carved with Satyr masks with leaf crowns above in-curving legs and hoof feet with leaf , 120cm wide and 61cm deep

*Provenance: by repute Elvaston Castle, Derbyshire, Private Collection, Ireland*

€ 10,000 - 15,000



387 A PERSIAN KOLIAI WOOL RUG,  
of oblong form, woven with a large diamond shaped  
lozenge, centred with flowerhead medallion against  
a red ground with scattered figures and animals, all  
within broad and narrow borders, 314 x 162cm

€ 500 - 700



388 A LARGE PERSIAN TABRIZ WOOL  
CARPET,  
the large central field woven with broad floral me-  
dallion surrounded by stylized leaves and contained  
within foliate border and geometric guard stripes, 410  
x 320cm

€ 700 - 1,000



389 AN ANTIQUE GEORAVAN WOOL  
CARPET,  
North-west Persia, c.1890, woven in soft red, blue and  
cream tones, the central field filled with large quatre-  
foil medallion and geometric motifs within multiple  
outer borders. 280 x 236cm

€ 800 - 1200



- 390 A NORTH INDIAN HAND KNOTTED WOOL RUG,  
 20th century, the large rectangular field centred with  
 a floral medallion in cream against a soft pink ground,  
 with floral sprays to each corner and contoured within  
 broad and narrow borders. 336 x 488cm approx.

€ 1,000 - 1,500



- 391 A MID-EASTERN 20TH CENTURY WOOL RUG,  
 the navy rectangular field woven with urn, animals  
 and tree of life, contained within a broad border of  
 interlinked flower heads and scrolling foliage. 187cm  
 x 128cm

€ 300 - 500



- 392 AN AFGHAN WOOL RUG,  
 the orange rectangular field with nine geometric pan-  
 els, divided by rows of oval medallions and contained  
 with a broad border of interlinked lozenges. 180cm x  
 118cm

€ 200 - 300



- 393 AN AFGHAN WOOL RUG,  
 decorated with rows of geometric designs, contained  
 within a red ground border of interlinked stylised  
 designs. 129cm x 91cm

€ 200 - 300



394 LOUIS PECOU (FRENCH, 20TH CENTURY)  
Calabeyre Medoc, Fishing Huts by the Coast  
Oil on canvas, 26 x 45cm  
Signed

€ 150 - 250



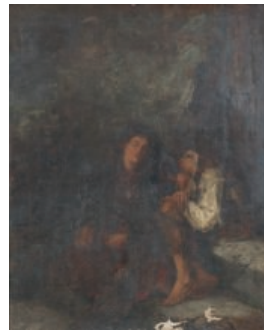
396 WILLEM VAN DER NAT (1865-1929)  
Pastoral scene with mother and child  
Watercolour, 30 x 46 cm  
Signed

€ 400 - 600



395 CLAUDE HAYES RHA (1852-1922)  
Cushing Bridge, Surrey, with Huntsmen and Hounds  
Watercolour, 38 x 52 cm  
Signed; also inscribed on a postcard verso

€ 400 - 600



397 ATTRIBUTED TO ALFRED GREY R.H.A. (1845-1926)  
Beggar boy and girl in woodland  
Oil on canvas, 63 x 50cm  
Signed

€ 300 - 500



398 A GEORGE III INLAID MAHOGANY SIDEBOARD, of rectangular form, with raised brass gallery back above a moulded top and four short frieze drawers divided by ribbon tied bellflower trails, a bottle drawer to the right and cupboard to the left, on tapering banded legs. 208cm wide x 75cm deep

€ 1,000 - 2,000



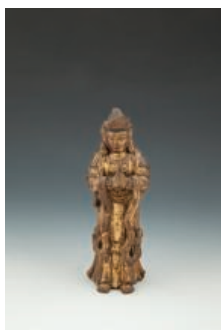
400 TWO VICTORIAN MAHOGANY FRAMED NURSING CHAIRS, mid 19th century, each with foliate carved frame and padded back and seat covered in a salmon pink damask, on short cabriole supports (2)

€ 150 - 250



399 A SET OF SIX VICTORIAN STYLE MAHOGANY DINING CHAIRS, comprising one carver and five single chairs, each with carved panel back and brown upholstered seat on fluted baluster supports (6)

€ 300 - 500



401 A CHINESE CARVED GILTWOOD FIGURE OF A DEITY, Ming Dynasty, standing with hands clasped, dressed in decorated robes, 26cm high

€ 400 - 600



403 AN AMERICAN TIFFANY SILVER OVAL CENTRE DISH, c.1900, Sterling standard, with gilded interior surrounded by a leafy flowerhead border, repeated to the four foot base, stamped 'Tiffany & Co., 5722m'. 20.5cm wide

€ 200 - 300



402 A COLLECTION OF CHINESE IVORIES, 19th century, comprising a pair of Cantonese card cases, 11.5cm, a carved oval stand decorated with dragons and pearl, 4.5cm wide, a carved Canton flower group, 4cm, a two character rectangular seal, 4cm high, and a circular box and cover (6)

€ 300 - 400



404 A CHINESE BLANC DE CHINE LIBATION CUP, 18th/19th century, formed as a rhinoceros horn, decorated with prunus on naturalistic base, 9cm wide; together with another 19th century libation cup carved with flowering prunus, 10.25cm wide (2)

€ 300 - 400



405 AN ENGLISH PORCELAIN TRANSFER PRINTED BOTANICAL BOWL  
colourfully decorated with titled specimens, repeated to the exterior, 29cm diameter  
€ 100 - 150



407 A PAIR OF CHINESE PAINTED AND ENAMELLED PORCELAIN PANELS,  
c.1900, depicting figures in a garden landscape and figures in an interior, with text to upper left corner, framed, 26 x 19cm (2)  
€ 200 - 300



406 A RARE GEORGE III CUT GLASS TEA CADDY,  
fitted with silvered collar and cover, engraved with crest, 13cm high  
€ 200 - 300



408 A CHINESE SANCAI GLAZED GARDEN SEAT,  
of traditional form, with pierced cartouche shaped panels filled with dragons in flight and pierced lion mask handles, 49cm high

*Provenance: Tony Sweeney Collection*

€ 300 - 500



409 A 16TH/17TH CENTURY TOOLED LEATHER BOX AND COVER, of rectangular form, the domed top mounted with wrought iron handle and strapwork lock, the leather with gilt traces, stamped to one side with initials 'I.G.', 26cm wide; together with a 16th century threaded lock and key (2)

€ 400 - 600



411 A JAPANESE SATSUMA POTTERY TRIPOD CENSOR, meiji period with silvered top. 14.5cm high.

€ 150 - 250



410 A GOOD COLLECTION OF CONTEMPORARY CERAMICS, including a Troika style blue glazed squared vase, 15cm high, an olive green and dappled stem bowl, 20.5cm diameter, a rustic pottery bowl stamped with initials P.M. within a circular reserve, 16cm diameter and four monochrome pottery vessels (7)

€ 300 - 500



412 A LATE 19TH CENTURY NORTH WEST AFRICAN ISLAMIC OAK TEACHING BOARD  
Inscribed with text from the Koran, 47cm long over the handle, 21cm wide

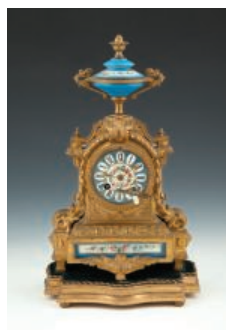
The label on the handle reads: '...teaching board on which Koran mystic inscriptions are inscribed by Fikis (holy teacher). The oak when dry is washed off and the resulting fluid prescribed as medicine for internal administration and external application...'

€ 100 - 150



413 A 19TH CENTURY CARY'S TERRESTRIAL POCKET GLOBE,  
London c.1791, 3" diameter, "agreeable to the latest discoveries", the sphere covered with twenty-four engraved segments, fitted in a globular shagreen case

€ 1,200 - 1,800



415 A FRENCH GILTMETAL AND PORCELAIN MOUNTED MANTLE CLOCK,  
19th century, surmounted by an urn above a drum shaped case and Sevres pattern porcelain dial, with Roman numerals applied with leafy cast ornament on fitted timber base. 34 x 20cm

€ 300 - 500



414 A 19TH CENTURY COROMANDEL GILT METAL MOUNTED THREE-PIECE WRITING SET,  
by Austin of Dublin, comprising a standish, a domed stationary casket and a rectangular blotter, each applied with gothic tracery mounts and set with painted porcelain roundels, inset with brass makers label and gilt, stamped 'Austin -Westmorland St. Dublin'. (3)

€ 300 - 500



416 A GEORGIAN STYLE WALNUT AND HERRINGBONE INLAID TEA CADDY,  
of rectangular form, with brass bracket handle and compartmented interior, 20cm wide; together with a burr walnut rectangular box, inlaid with oval paterae and fan-shaped corner ornament, 14.5cm wide (2)

€ 150 - 200



417 18TH CENTURY SCHOOL  
Portrait of a lady in a Classical setting  
Oval, needlework panel, 30cm high

€ 700 - 1,000

418 AFTER RAPHAEL (ITALIAN 19TH CENTURY)  
The Madonna De'lla Sedia  
Oil on Canvas, 4cm diameter  
Contained within a Florentine frame

€ 300 - 500



419 O.W. MARSHALL (BRITISH,  
C.1890)  
A Riverside Manor by Moonlight *and*  
A Country Lane by Moonlight  
A pair, oil on canvas, 30,5 x 41cm  
Both signed lower left

€ 1,000 - 1,500





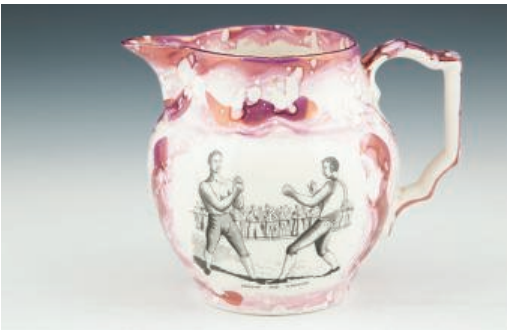
420 WALTER HEATH WILLIAMS (19TH CENTURY)  
A Man Herding Sheep on a Wooded Riverside Path - Cattle Watering Nearby  
Oil on canvas, 46 x 61cm

€ 1,500 - 2,500



421 A WILLIAM IV MAHOGANY CIRCULAR BREAKFAST TABLE,  
c.1830, the moulded top with chanelled edge on a leaf carved centre pillar support, downswept  
supports and brass castors. 123cm diameter

€ 400 - 600



422 A SUNDERLAND LUSTRE STYLE JUG,  
of circular baluster form, decorated with monochrome printed boxing match "Spring and Langan", a verse to the reverse, 15cm high

€ 50 - 80



425 A LARGE FRENCH POTTERY SERVING DISH,  
of circular form with a yellow glaze, decorated with blue and red foliage, 49cm diameter

€ 100 - 150



423 A LATE 19TH CENTURY ROYAL CROWN DERBY PART DESSERT SERVICE,  
comprising twelve side plates, four leaf-shaped dishes and two shaped serving plates

€ 300 - 400



426 AN OTTOMAN MOTHER OF PEARL INLAID CASKET, 18TH CENTURY,  
of rectangular form, inlaid with diamond shaped coloured segments, on squared supports. 23cm wide

€ 200 - 300



424 A LARGE FRENCH POTTERY SERVING DISH,  
of circular form with a yellow glaze, depicting fruits and foliage, 49cm diameter.

€ 100 - 150



427 A CHINESE BRONZE CENSOR,  
of compressed baluster form having twin swing handles and a removable pierced lid, decorated with a dragon in clouds. 17cm diameter

€ 100 - 200



428 A CHINESE BLUE AND WHITE EXPORT DISH,  
18th century, of oblong form, painted with willow, pagodas and boat in a river landscape, contained within a diaper banded border; together with another dish of similar period and shape, decorated with deer and pine in a garden landscape (2)

€ 300 - 400



429 TWO LARGE CHINESE BLUE AND WHITE SERVING DISHES,  
18th century, of oblong form, painted with traditional pagoda and mountain landscapes, within a floral and diaper banded border (2)

€ 300 - 500



430 A LARGE CHINESE FAMILLE VERT PORCELAIN URN,  
converted to a table lamp, decorated profusely with foliate designs to represent a garden landscape. 60cm high

€ 400 - 700

- 431 A REGENCY STYLE THREE PILLAR  
EXTENDING DINING TABLE,  
of oval form, the moulded top with reeded edge  
supported on turned leaf carved pillars and reeded  
downswept legs with brass lion paw fet. 288 x 106cm

€ 300 - 500



- 432 A GEORGE III INLAID MAHOGANY  
BOWFRONT SIDEBOARD,  
the top banded in satinwood above two frieze drawers  
and cupboard decorated with inlaid oval reserve with  
urns flanked by single door cupboards and drawers,  
decorated with inlaid classical figure, raised on square  
tapering legs. 230 x 73cm

€ 400 - 600



- 433 A VICTORIAN MAHOGANY RECTANGULAR  
FOLDING TOP TEA TABLE,  
the swivel top raised on turned tapering centrepillar  
on quadruped platform base with scroll feet. 91 x  
43cm

€ 100 - 200



434 THE ROBERT E. LEE COMMEMORATIVE PISTOL,  
authorised by the U.S Historical Society, the 1851 navy 36 cal percussion revolver with 7.5" (19cm) octagonal blued barrel and gold decoration, two part walnut grip with portrait medallion, SE#698 13" (33cm) overall, within a fitted commemorative wooden case with powder flask, cap tin and medallion

€ 500 - 800



436 THE ANDREW JACKSON COMMEMORATION FLINT LOCK PISTOL,  
45cal with 8.75" (22cm), octagonal brown barrel, 14.5" (37cm) overall, 14K gold edition no.34 of 100 3/4 aged tiger-stripped American Maple Stock, ram-rod tip and ferrules in gold nose cap, in original velvet lined wooden and parcel gilt case, unlined wooden and parcel gilt case, , authorised by the U.S Historical Society

€ 300 - 500



435 THE SAM HOUSTON COMMEMORATIVE COLT WALKER REVOLVER,  
in fitted presentation case with tooled leather top inscribed "1973 Sam Houston 1863", a limited edition of the largest hand gun ever produced by Colt- The Whitneyville Walker, 44 cal 9" (22.5), barrel blue finish and gold ornamentation, two part wooden grip with portrait medallion #279, 15.5" (39cm)overall, the velvet lined case with fitted accessories including powder flask bullet mould cap tin, combination nipple wrench/ screw driver; together with loading instructions certificate and letters.

€ 600 - 800



437 A PAIR OF CASED SPANISH REPRODUCTION PERCUSSION DUALLING PISTOLS,  
44cal, each with 9.5" (24cm) octagonal blued and fluted barrel on half walnut stock, steel furniture and lock, flared and fluted grip in green velvet lined fitted case, with usual accessories, powder flask, bullet mould cleaning rod, ram rod etc.

€ 300 - 500



438 ELIZABETH RIVERS RHA (1903-1964)  
Island View from the Ferry  
Pen and ink, 17 x 23cm  
Provenance: The Frederick Gallery - Elizabeth Rivers Estate - November 1998, No.204.

€ 80 - 120



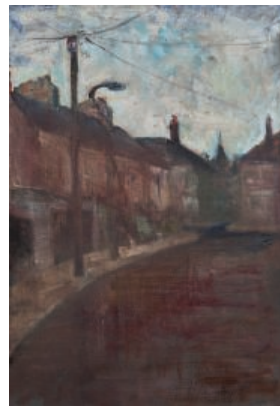
440 DESMOND SHORTT  
(CONTEMPORARY)  
Forest Scenes  
A pair, oil on board, 60 x 60cm  
Signed, dated 2000 and inscribed with title verso

€ 200 - 400



439 DIMITRI BROE  
(CONTEMPORARY)  
Abstract Blue Figure  
Pastel, 30 x 18cm  
Signed  
Together with another monochrome drawing of a Bog Scene by the same hand  
(2)

€ 100 - 200



441 BRIAN MCMANUS  
(CONTEMPORARY)  
Street Scene  
Oil on canvas, 67 x 46cm

€ 100 - 150



442 KAT JEPPE DREWS (DANISH, 1884-1964)  
Shore scene at sunset with a beached boat at low tide  
Oil on canvas, 50 x 70.5cm  
Signed lower left  
€ 500 - 800



444 THOMAS WALLEY (BRITISH, 1871-1878)  
Portraits of children  
A pair, circular oil on canvas, 61cm diameter  
€ 1,500 - 2,000



443 ARTHUR GILBERT (1819-1895)  
'Lingfield Common'  
Oil on canvas 30 x 46cm  
Provenance: Ex collection Rev. H. Corbould, of Carshalton, South London, whose collection was sold by Sotheby's, spring 1958  
€ 1,500 - 2,500



445 DARIUS J. MAC EGAN (1856-1939)  
River Landscape with figure  
Oil on canvas, 36 x 46cm  
Signed and dated 'MacEgan 1902'  
€ 100 - 200



446 TOM NISBET RHA (1909-2001)  
Grand Canal at Mespil Road, Dublin  
Watercolour, 28 x 39cm  
Signed

€ 250 - 350



449 JOHN FRANCIS SKELTON (B. 1954)  
Gathering the Harvest  
Oil on board, 26 x 36cm  
Signed

€ 150 - 200



447 MAEVE TAYLOR (B.1928)  
Memories  
Oil on board, 20 x 25cm  
Signed, inscribed on artist's label verso

€ 200 - 300



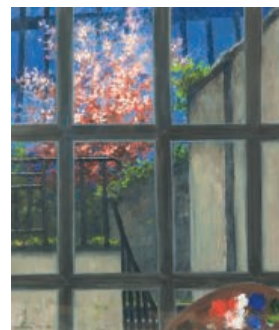
450 DESMOND COURTNEY KENNY  
(FL 1930-1958)  
Summer Flowers  
Oil on board, 66 x 51 cm  
Signed

€ 700 - 1,000



448 TOM CULLEN (1934-2001)  
On The Poddle River  
Oil on canvas, 33 x 60cm  
Signed and dated 1981

152 € 250 - 350



451 EOIN MACLOCHLAINN (20TH/21ST CENTURY)  
From a Basement Window  
Oil on board, 61 x 51cm  
Signed and dated '90

€ 100 - 150





452 M. YEINSTEIN (20TH CENTURY)  
Still Life of flowers in a Blue Vase  
Oil on canvas, 32 x 39cm, Signed  
Together with; a reproduction print after Sean O'Sullivan  
and a 19th century hand coloured print of a Buddleia (3)

€ 100 - 150



455 JOSEPH QUILTY (1914-1995)  
Herring on a Plate  
Oil on board, 29 x 39cm  
Signed

€ 200 - 400



453 IRISH SCHOOL (C.1960)  
Abstract Study  
Oil on Board, 29 x 33cm

€ 100 - 200



454 CAROLINE SCALLY (1886 - 1973)  
Islandbridge  
Oil on board, 25 x 39cm  
Signed

€ 150 - 250



456 JONATHAN KNUTTTEL (B.1972)  
Table for One  
Oil on canvas, 70 x 70cm  
Signed

€ 400 - 600



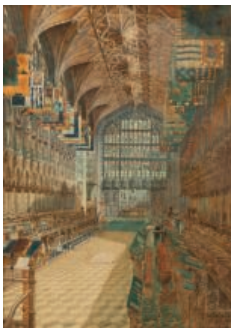
457 FRED MC ELWEE (B.1947)  
Roscrea  
Oil on board, 30 x 39cm  
Signed  
€ 200 - 300



460 WILLIAM MAGRATH (1838-1918)  
Going to the Well, (a peasant girl carrying an empty  
water ewer in a rural landscape)  
Watercolour, 39.5 x 30cm  
Signed and dated 1875  
€ 400 - 600



458 COLIN H. GREENWOOD (1880-1881)  
Near Beachy Head  
A pair, watercolour, 8 x 12.5 cm  
Inscribed with title and dated 8th Oct. 1874 verso. (2)  
€ 300 - 500



459 WILLIAM CALLOW (1812-1908)  
Interior of York Cathedral  
Watercolour, 73 x 52cm  
€ 500 - 800



461 ROBERT TAYLOR CARSON RHA HRUA  
(B.1919)  
At The Cattle Fair  
Mixed media on board, 26.5 x 47.5cm  
Signed  
€ 200 - 400



462 A MODERN UPHOLSTERED THREE SEATER SETTEE

with loose cushions covered in foliate pattern blue ground material and blue fringing

€ 500 - 600



465 A PAIR OF MODERN TRAY TOP SIDE TABLES,  
with shaped gallery and square fluted supports,  
49.5cm high, 62.5cm wide, 43cm deep (2)

€ 100 - 150



463 A LATE 19TH CENTURY GILTWOOD AND GESSO WALL MIRROR,  
of upright rectangular form, the plain glass plate  
contained within beaded border and foliate moulded  
frame, crested with scrolling leafy motifs

€ 600 - 1,000



466 CHÂTEAU LATOUR 1993  
Pauillac, Bordeaux, France  
5 btls., 75cl.

€ 1,000 - 1,500



464 AN ORIENTAL CLOISSONNÉ ENAMEL JARDINIÈRE,  
early 20th century, of ovoid form, decorated with  
dragons and auspicious objects against a turquoise  
ground, 22cm high

€ 80 - 120



467 CHÂTEAU DECRU-BEAUCAILLOU  
1970  
Saint-Julien, Bordeaux, France  
2 btls., 75cl.

€ 150 - 250



468 CHÂTEAU D'YQUEM 1990  
Sauternes, Bordeaux, France  
3 btls., 75cl.

€ 600 - 900



470A CHÂTEAU MOUTON-ROTHSCHILD 1998,  
PAUILLAC,  
France, 1 magnum, 1.5L. Fill level: top of shoulder

€ 500 - 800



469 CHÂTEAU BEYCHEVELLE  
1982  
Saint-Julien, Bordeaux, France  
2 btls., 75cl; together with: Château Du Domaine  
De L'Eglise 1981, Pomerol, Bordeaux, France, 1  
btl., 75cl.; and Grand Vin de Leoville du Marquis  
de Las Cases 1979, Saint-Julien, Bordeaux, France,  
1 btl., 75cl.

€ 300 - 500



471 HENRY CHARLES BREWER, R.I. (1866-  
1950)

A Street in Seville  
Coloured etching, 63 x 40cm  
Signed and inscribed with title

€ 50 - 100



470 OPUS ONE 1986  
Baron Phillippe De Rothschild  
Napa Valley, California, USA  
1 btl., 75cl.

€ 150 - 200



472 THOMAS MORRIS (LATE 18TH CENTURY)  
AFTER WILLIAM MARLOW  
Ludgate Street from Ludgate Hill (c.1792)  
Hand coloured engraving, 56 x 41cm

€ 200 - 300



473 RONALD DEAN (B.1929)  
Upper Pool River Thames (c.1947)  
Watercolour & gouache, 33 x 51cm  
Signed and inscribed with title

€ 100 - 200



476 THREE PAIRS OF REPRODUCTION  
AND OTHER SPORTING PRINTS  
(6)

€ 50 - 60



474 ENGLISH SCHOOL, 19TH CENTURY  
The Lake of Barmore, Isle of Bute  
Watercolour

€ 200 - 300



477 ITALIAN SCHOOL  
4 Monochrome engravings dedicated to Pope  
Leo XI, Pope Alexander VII, Cardinal Richelieu  
and a depiction of a tribute statue to the imag-  
ined arts, 42 x 31 cm

€ 100 - 200



475 A COLLECTION OF TEN FRAMED  
CARICATURE PRINTS,  
depicting legal types. 29 x 19cm (10)

€ 50 - 60



478 DOROTHY DODDRELL (20TH  
CENTURY)

"He Leadeth Me"

Illuminated poem by Henry H. Barry  
Paint and Gold Leaf, 48 x 30.5cm  
Signed

Dorothy Doddrell is best known for executing  
the WWI Roll of Honour at her former art school,  
Glasgow School of Art, which thankfully survived  
the recent fire.

€ 200 - 400

479 CONTINENTAL SCHOOL (LATE 19TH/  
EARLY 20TH CENTURY

Swiss lake with trees

Watercolour, 15 x 22cm;

Together with another similar watercolour  
depicting a coastal scene (2)

€ 80 - 120

480 TOM SIMPSON

Coliemore House Harbour Co. Dublin

Watercolour, 24.5 x 34.5cm (9¾ x 13½")

Signed. Inscribed with title verso. Cynthia O'Connor  
Gallery exhibition label verso.

€ 500 - 800



481 COLONEL V. CHARLES PRATT (1789-  
1869)

Coliemore Port and Dalkey Island

Pencil, 23.5 x 35cm (9¼ x 13¾")

Inscribed with title and dated September 24th  
1949

Exhibited: "Topographical Views", Cynthia O'Connor  
Gallery, March 1983, Catalogue No.

€ 200 - 300

482 COLONEL V. CHARLES PRATT (1789-  
1869)

Bathing Place under Killiney Hill

Pencil, 14 x 21.5cm (5½ x 8½")

Inscribed with title verso and dated July 16th  
1936 verso

€ 80 - 120

483 COLONEL V. CHARLES PRATT  
(1789-1869)

Killiney Bay 1855

Watercolour, 39.5 x 58cm (15½ x 22¾)

Signed and inscribed verso: 'April 1855  
sketched and coloured on the spot'.

Exhibited: "Topographical Views", Cynthia  
O'Connor Gallery, March 1983, Catalogue  
No. 37

€ 120 - 180

484 A GEORGE IV MAHOGANY  
FRAMED TOILET  
MIRROR,

c.1825, the rectangular plate on adjustable  
upright supports and twin frieze drawers  
to base

€ 150 - 200

485 AN EDWARDIAN BRASS RAIL  
FENDER,

c.1900, the frieze with a row of spherical  
supports on outset plinth base. 147cm  
wide

€ 100 - 200

486 AN EDWARDIAN BRASS FRAME  
RAIL FENDER,

with tubular rail supported on a row of  
turned spheres and outset plinth base.  
147cm wide

€ 100 - 200



487 A GEORGIAN REVIVAL  
MAHOGANY TWO TIER JARDINIERE  
STAND,

c.1900, in the Chinese Chippendale style, with  
square pierced gallery on blind fretwork supports  
and conforming undertier with concealed drawer  
on fretwork legs and pierced cross frame stretcher

€ 200 - 400

- 487 A GEORGIAN REVIVAL MAHOGANY TWO TIER JARDINIÈRE STAND, c.1900, in the Chinese Chippendale style, with square pierced gallery on blind fretwork supports and conforming undertier with concealed drawer on fretwork legs and pierced cross frame stretcher
- € 200 - 400
- 488 A PAIR OF SIMILAR MAHOGANY WALL BRACKETS, with neo-classical carved decoration and finials above a horizontal rectangular bevelled mirror, above twin bevelled mirrors framed by two shelves. 60cm high x 28cm wide
- € 100 - 200
- 489 A LATE VICTORIAN BLACK SLATE CASED MANTLE CLOCK, of architectural form, with rouge marble insets and gilt incised decoration, enclosing a circular dial with painted Roman numerals
- € 100 - 200
- 490 A GEORGE IV STYLE MAHOGANY WALL MIRROR, the rectangular plate flanked by cluster column pilasters, surmounted by a moulded cornice and open frieze. 74 x 50cm
- € 100 - 150
- 491A ROBERT S. SHORE RHA (1868-1931)  
Figures by the Coastline  
Oil on board, 19 x 30cm  
Signed
- € 200 - 300
- 491 A SMALL EDWARDIAN MAHOGANY MANTLE CLOCK, the domed top above a painted enamel dial, the case decorated with inlaid herringbone stringing. 34 x 27cm high
- € 100 - 150
- 492 A SMALL INLAID MAHOGANY CASED CLOCK, the domed top with brass carrying handle, decorated with inlaid Bellflowers and swags and a small balloon shaped clock. 20cm high x 22cm high
- € 150 - 200
- 494 SAMUEL WALSH (B.1951)  
Four of Mother's Plants  
Print, No. 7/9, 42 x 60cm
- € 150 - 250
- 495 AFTER GEORGE WILLDEY (17TH/18TH CENTURY)  
Map of Great Britain and Ireland  
Framed colour reproduction print, 76 x 55cm; together with After Thomas Jeffries, The Virgin Islands from English and Danish Surveys, framed colour reproduction print (2)
- € 100 - 200
- 496 AFTER WILLIAM HOGRAH (1697-1764)  
A Harlot's Progress  
A set of six mounted steel engravings, 20 x 25cm; together with 'Marriage a la Mode', a set of six mounted black and white engravings, 20 x 25cm (12)
- € 100 - 200

*CONCLUSION OF SALE*

## Additional Lots

- 15 A CASED SET OF FOUR IRISH 'CELTIC REVIVAL' SILVER BOOKMARKS, Dublin 1979, each cast with Celtic motifs. (4)

€150 – 250

- 45 AN AMERICAN STERLING STANDARD SILVER PINTRAY MARKED STIEFF, of shallow circular form, embossed with a continuous foliate border. 8cm diameter; together with an American silver matchbox holder by S. Kirk and Son, c.1920-41, and a cased set of six Art Deco pastry fork, Birmingham 1946. (3)

€100 - 200



## General Terms and Conditions of Business

The Auctioneer carries on business on the following terms and conditions and on such other terms or conditions as may be expressly agreed with the Auctioneer or set out in any relevant Catalogue. Conditions 12-21 relate mainly to buyers and conditions 22-32 relate mainly to sellers. Words and phrases with special meanings are defined in condition 1. Buyers and sellers are requested to read carefully the Cataloging Practice and Catalogue Explanation contained in condition 2.

### DEFINITIONS AND GENERAL CONDITIONS

#### DEFINITIONS

1. In these conditions the following words and expressions shall have the following meanings:

'Auctioneer' – James Adam & Sons.

'Auctioneer's Commission' – The commission payable to the Auctioneer by the buyer and seller as specified in conditions 13 and 25.

'Catalogue' – Any advertisement, brochure, estimate, price list or other publication.

'Forgery' – A Lot which was made with the intention of deceiving with regard to authorship, culture, source, origin, date, age or period and which is not shown to be such in the description therefore in the Catalogue and the market value for which at the date of the auction was substantially less than it would have been had the Lot been in accordance with the Catalogue description.

'Hammer Price' – The price at which a Lot is knocked down by the Auctioneer to the buyer.

'Lot' – Any item which is deposited with the Auctioneer with a view to its sale at auction and, in particular, the item or items described against any Lot number in any Catalogue.

'Proceeds of Sale' – The net amount due to the seller being the Hammer Price of the Lot after deducting the Auctioneer's Commission thereon under condition 25 the seller's contribution towards insurance under condition 26, such VAT as is chargeable and any other amounts due by the seller to the Auctioneer in whatever capacity howsoever arising.

'Registration Form or Register' – The registration form (or, in the case of persons who have previously attended at auctions held by the Auctioneer and completed registration forms, the register maintained by the Auctioneer which is compiled from such registration forms) to be completed and signed by each prospective buyer or, where the Auctioneer has acknowledged pursuant to condition 12 that a bidder is acting as agent on behalf of a named principal, each such bidder prior to the commencement of an auction.

'Sale Order Form' – The sale order form to be completed and signed by each seller prior to the commencement of an auction.

'Total Amount Due' – The Hammer Price of the Lot sold, the Auctioneer's Commission due thereon under condition 13, such VAT as is chargeable and any additional interest, expenses or charges due hereunder.

'V.A.T.' – Value Added Tax.

#### Cataloguing Practice and Catalogue Explanations

2. Terms used in Catalogues have the following meanings and the Cataloguing Practice is as follows:

The first name or names and surname of the artist;  
In the opinion of the Auctioneer a work by the artist.

The initials of the first name(s) and the surname of the artist;  
In the opinion of the Auctioneer a work of the period of the artist and which may be in whole or in part the work of the artist.

The surname only of the artist;  
In the opinion of the Auctioneer a work of the school or by one of the followers of the artist or in his style.

The surname of the artist preceded by 'after';  
In the opinion of the Auctioneer a copy of the work of the artist.  
'Signed'/'Dated'/'Inscribed';  
In the opinion of the Auctioneer the work has been signed/dated/  
inscribed by the artist.

'With Signature'/'with date'/'with inscription';  
In the opinion of the Auctioneer the work has been signed/  
dated/inscribed by a person other than the artist.

'Attributed to';  
In the opinion of the Auctioneer probably a work of the artist.

Studio of/Workshop of'  
In the opinion of the Auctioneer a work executed in the studio  
of the artist and possibly under his supervision.

'Circle of';  
In the opinion of the Auctioneer a work of the period of the  
artist and showing his influence.

'Follower of';  
In the opinion of the Auctioneer a work executed in the artist's  
style yet not necessarily by a pupil.

'Manner of';  
In the opinion of the Auctioneer a work executed in artist's  
style but of a later date.  
'\*';

None of the terms above are appropriate but in the  
Auctioneer's opinion the work is a work by the artist named.

### GENERAL CONDITIONS

#### Auctioneer Acting as Agent

3. The Auctioneer is selling as agent for the seller unless it is specifically stated to the contrary. The Auctioneer as agent for the seller is not responsible for any default by the seller or the buyer.

#### Auctioneer Bidding on behalf of Buyer

4. It is suggested that the interests of prospective buyers are best protected and served by the buyers attending at an auction. However, the Auctioneer will, if instructed, execute bids on behalf of a prospective buyer. Neither the Auctioneer nor its employees, servants or agents shall be responsible for any neglect or default in executing bids or failing to execute bids.

#### Admission to Auctions

5. The Auctioneer shall have the right exercisable in its absolute discretion to refuse admission to its premises or attendance at its auctions by any person.

#### Acceptance of Bids

6. The Auctioneer shall have the right exercisable in its absolute discretion to refuse any bids, advance the bidding in any manner it may decide, withdraw or divide any Lot, combine any two or more Lots and, in the case of a dispute, to put any Lot up for auction again.

#### Indemnities

7. Any indemnity given under these conditions shall extend to all actions, proceedings, claims, demands, costs and expenses whatever and howsoever incurred or suffered by the person entitled to the benefit of the indemnity and the Auctioneer declares itself to be a trustee of the benefit of every such indemnity for its employees, servants or agents to the extent that such indemnity is expressed to be for their benefit.

#### Representations in Catalogues

8. Representations or statements made by the Auctioneer in any Catalogue as to contribution, authorship, genuineness, source, origin, date, age, provenance, condition or estimated selling price or value is a statement of opinion only. Neither the Auctioneer nor its employees, servants or agents shall be responsible for the accuracy of any such opinions. Every person

interested in a Lot must exercise and rely on their own judgment and opinion as to such matters.

9. The headings of the conditions herein contained are inserted for convenience of reference only and are not intended to be part of, or to effect, the meaning or interpretation thereof.

#### Governing Law

10. These conditions shall be governed by and construed in accordance with Irish Law.

#### Notices

11. Any notice or other communication required to be given by the Auctioneer hereunder to a buyer or a seller shall, where required, be in writing and shall be sufficiently given if delivered by hand or sent by post to, in the case of the buyer, the address of the buyer specified in the Registration Form or Register, and in the case of the seller, the address of the seller specified in the Sale Order Form or to such other address as the buyer or seller (as appropriate) may notify the Auctioneer in writing. Every notice or communication given in accordance with this condition shall be deemed to have been received if delivered by hand on the day and time of delivery and if delivered by post three (3) business days after posting.

#### The Buyer

12. The buyer shall be the highest bidder acceptable to the Auctioneer who buys at the Hammer Price. Any dispute which may arise with regard to bidding or the acceptance of bids shall be settled by the Auctioneer. Every bidder shall be deemed to act as principal unless the Auctioneer has prior to the auction, acknowledged in writing that a bidder is acting as agent on behalf of a named principal.

#### Commission

13. The buyer shall pay the Auctioneer a commission at the rate of 20%, exclusive of V.A.T..

#### Payment

14. Unless credit terms have been agreed with the Auctioneer before the auction the buyer of a Lot shall pay to the Auctioneer within one (1) day from the date of the auction the Total Amount Due. Notwithstanding this, the Auctioneer may, in its sole discretion, require a buyer to pay a deposit of 25% of the Total Amount Due at the conclusion of the auction.

The Auctioneer may apply any payments received by a buyer towards any sums owing from that buyer to the Auctioneer on any account whatever regardless of any directions of the buyer or his agent in that regard whether express or implied.

The Auctioneer shall only accept payment from successful bidders in cash or by the bidder's own cheque. Cheques drawn by third parties, whether in the Auctioneer's favour or requiring endorsement, shall not be accepted.

#### Reservation of Title

15. Notwithstanding delivery or passing of risk to the buyer the ownership of a Lot shall not pass to the buyer until he has paid to the Auctioneer the Total Amount Due.

#### Collection of Purchases

16. The buyer shall at his own expense collect the Lot purchased not later than seven (7) days after the date of the auction but (unless credit terms have been agreed with the Auctioneer pursuant to condition 14) not before payment to the Auctioneer of the Total Amount Due.

The buyer shall be responsible for any removal, storage and insurance charges in respect of any Lot which is not taken away within seven (7) days after the date of the auction.

The purchased Lot shall be at the buyer's risk in all respects from the earlier of the time of collection or the expiry of one (1) day from the date of the auction. Neither the Auctioneer nor its employees, servants or agents shall thereafter be liable for any loss or damage of any kind howsoever caused while a purchased Lot remains in its custody or control after such time.

#### Packaging and Handling of Purchased Lots

17. Purchased Lots may be packed and handled by the Auctioneer, its employees, servants or agents. Where this is done it is undertaken solely as a courtesy to buyers and at the discretion of the Auctioneer. Under no circumstances shall the Auctioneer, its employees, servants or agents be liable for damage of any kind and howsoever caused to glass or frames nor shall the Auctioneer be liable for the errors or omissions of, or for any damage caused by, any packers or shippers which the Auctioneer has recommended.

#### Non-Payment or Failure to Collect Purchased Lots

18. If a buyer fails to pay for and/or collect any purchased Lot by the dates herein specified for payment and collection the Auctioneer shall, in its absolute discretion and without prejudice to any other rights or remedies it may have, be entitled to exercise one or more of the following rights or remedies without further notice to the buyer:

- (a) To issue court proceedings for damages for breach of contract;
- (b) To rescind the sale of that Lot or any other Lots sold to the buyer whether at that or at any other auction;
- (c) To resell the Lot or cause it to be resold whether by public auction or private sale. In the event that there is a deficiency between the Total Amount Due by the buyer and the amount received by the Auctioneer on such resale after deduction of any necessary expenses the difference shall be paid to the Auctioneer by the buyer. Any surplus arising shall belong to the seller.
- (d) To store (whether at the Auctioneer's premises or elsewhere) and insure the purchased Lot at the expense of the buyer.
- (e) To charge interest on the Total Amount Due at the rate of 2% over and above the base rate from time to time of Bank of Ireland or if there be no such rate, the nearest equivalent thereto as determined by the Auctioneer in its absolute discretion from the date on which payment is due hereunder to the date of actual payment.
- (f) To retain that Lot or any other Lot purchased by the buyer whether at the same or any other auction and release same to the buyer only after payment to the Auctioneer of the Total Amount Due.
- (g) To apply any sums which the Auctioneer received in respect of Lots being sold by the buyer towards settlement of the Total Amount Due.
- (h) To exercise a lien on any property of the buyer in the possession of the Auctioneer or whatever reason.

#### Liability of Auctioneer and Seller

19. Prior to auction ample opportunity is given for the inspection of the Lots on sale and each buyer by making a bid acknowledges that he has, by exercising and relying on his own judgment, satisfied himself as to the physical condition, age and Catalogue description of each Lot (including but not restricted to whether the Lot is damaged or has been repaired or restored). All Lots are sold with all faults and imperfections and errors of description. None of the seller, the Auctioneer nor any of their employees, servants or agents shall be responsible for any error of description or for the condition or authenticity of any Lot. No warranty whatsoever is given by the seller or Auctioneer or by any of their employees, servants or agents in respect of any Lot and any condition or warranty express or implied by statute or otherwise is hereby specifically excluded.

#### Forgeries

20. Any amount paid by a buyer in respect of a Lot which, if it is proved within three (3) years of the date of the auction at which it was purchased, to have been a Forgery shall be refunded to the seller subject to the provisions hereof, provided that:

- (a) The Lot has been returned by the buyer to the Auctioneer within three (3) years of the date of the auction in the same condition in which it was at the time of the auction together with evidence proving that it is a Forgery, the number of the Lot and the date of the auction at which it was purchased;
- (b) The Auctioneer is satisfied that the Lot is a Forgery and that the buyer has and is able to transfer good and marketable title to the Lot free from any third party claims;

FURTHER PROVIDED THAT the buyer shall have no rights hereunder if:  
(i) The description of the Lot in the Catalogue at the time of the auction was in accordance with the then generally accepted opinion of scholars or experts or fairly indicated that there was a conflict of such opinion;

(ii) The only method of establishing at the time of the auction in question that the Lot was a Forgery would have been by means of scientific processes which were not generally accepted for use until after the date of the auction or which were unreasonably expensive or impractical.

The buyer's sole entitlement under this condition is to a refund of the actual amount paid by him in respect of the Lot. Under no circumstances shall the Auctioneer be liable for any damage, loss (including consequential, indirect or economic loss) or expense suffered or incurred by the buyer by reason of the Lot being a Forgery.

The benefit of this condition shall be solely and exclusively for the buyer and shall not be assignable. The buyer shall for the purpose of this con

dition be the person to whom the original invoice in respect of the sale of the Lot is made.

#### Photographs

21. The buyer authorises the Auctioneer at any time to make use of any photographs or illustrations of the Lot purchased by the buyer for such purposes as the Auctioneer may require.

#### CONDITIONS WHICH MAINLY CONCERN THE SELLER

##### Auctioneer's Discretion

22. With regard to the sale of any Lot the Auctioneer shall have the following powers exercisable solely in the discretion of the Auctioneer:

- (i) To decide whether to offer any Lot for sale or not;
- (ii) To decide whether a particular Lot is suitable for sale by the Auctioneer and, if so, to determine which auction, the place and date of sale, the conditions of sale and the manner in which such sale should be conducted;
- (iii) To determine the description of any Lot in a Catalogue.
- (iv) To decide whether the views of any expert shall be obtained and to submit Lots for examination by any such experts.
- (v) To determine what illustration of a Lot (if any) is to be included in the Catalogue.

##### Seller's Warranty and Indemnity

23. The seller warrants to the Auctioneer and to the buyer that he is the true owner of the Lot or is legally authorised to sell the Lot on behalf of the true owner and can transfer good and marketable title to the Lot free from any third party claims. As regards Lots not held by the Auctioneer on its premises or under its control the seller warrants and undertakes to the Auctioneer and the buyer that the Lot will be available and in a deliverable state on demand by the Auctioneer or buyer. The seller shall indemnify the Auctioneer and the buyer or any of their respective employees, servants or agents against any loss or damage suffered by any of them in consequence of any breach of the above warranties or undertakings by the seller.

##### Reserves

24. Subject to the Auctioneer's discretion, the seller shall be entitled prior to the auction to place a reserve on any Lot. All reserves must be agreed in advance by the Auctioneer and entered on the Sale Order Form or subsequently be confirmed in writing to the Auctioneer prior to auction. This also applies to changes in reserves. A reserve may not be placed upon any Lots under IRE100 in value. The reserve shall be the minimum Hammer Price at which the Lot may be sold by the Auctioneer. A reserve once in place may only be changed with the consent of the Auctioneer. A commission shall be charged on the 'knock-down' bid for Lots which fail to reach the reserve price. Such commission shall be 5% of the 'knock-down' bid. This commission and any VAT payable thereon must be paid before removal of the Lot after the auction. The minimum commission hereunder shall be IR £25. The Auctioneer may in its sole discretion sell a Lot at a Hammer Price below the reserve therefore but in such case the Proceeds of Sale to which the seller shall be entitled shall be the same as they would have been had the sale been at the reserve.

Unless a reserve has been placed on a Lot in accordance with the provisions set out above such Lot shall be put up for sale without reserve.

In the event that any reserve price is not reached at auction then for so long as the Lot remains with the Auctioneer and to the extent that the Lot has not been re-entered in another auction pursuant to condition 31 the seller authorises the Auctioneer to sell the Lot by private treaty at not less than the reserve price. The Auctioneer shall ensure that in such a case those conditions herein which concern mainly the buyer shall, with any necessary modification, apply to such sale.

##### Commission

25. The seller shall pay the Auctioneer commission at the rate of 10% on the Hammer Price of all Lots sold on behalf of the seller at Irish Art Sales and 17.5% on the Hammer Price of all Lots sold on behalf of the seller at Fine Art, Wine

and Militaria Sales together with V.A.T. thereon at the applicable rate. The seller authorises the Auctioneer to deduct from the Hammer Price paid by the buyer the Auctioneer's Commission under this condition; VAT payable at the applicable rates and any other amounts due by the seller to the Auctioneer in whatever capacity howsoever arising. The seller agrees that the Auctioneer may also receive commission from the buyer pursuant to condition 13.

##### Insurance

26. Unless otherwise instructed by the seller, all Lots (with the exception of motor vehicles) deposited with the Auctioneer or put under its control for sale shall automatically be insured by the Auctioneer under the Auctioneer's own fine arts policy for such sum as the Auctioneer shall from time to time in its absolute discretion determine. The seller shall pay the Auctioneer a contribution towards such insurance at the rate of 1% of the Hammer Price plus VAT. If the seller instructs the Auctioneer not to insure a Lot then the Lot shall at all times remain at the risk of the seller who undertakes to indemnify the Auctioneer and hold the Auctioneer harmless against any and all claims made or proceedings brought against the Auctioneer of whatever nature and howsoever and wheresoever occurring for loss or damage to the Lot. The sum for which a Lot is covered for insurance under this condition shall not constitute and shall not be relied upon by the seller as a representation, warranty or guarantee as to the value of the Lot or that the Lot will, if sold by the Auctioneer, be sold for such amount. Such insurance shall subsist until such time as the Lot is paid for and collected by the buyer or, in the case of Lots sold which are not paid for or collected by the buyer by the due date hereunder for payment or collection such due date or, in the case of Lots which are not sold, on the expiry of seven (7) days from the date on which the Auctioneer has notified the seller to collect the Lots.

##### Rescission of Sale

27. If before the Auctioneer has paid the Proceeds of Sale to the seller the buyer proves to the satisfaction of the Auctioneer that the Lot sold is a Forgery and the requirements of condition 20 are satisfied the Auctioneer shall rescind the sale and refund to the buyer any amount paid to the Auctioneer by the buyer in respect of the Lot.

##### Payment of Proceeds of Sale

28. The Auctioneer shall remit the Proceeds of Sale to the seller not later than thirty (30) days after the date of the auction, provided however that, if by that date, the Auctioneer has not received the Total Amount Due from the buyer then the Auctioneer shall remit the Proceeds of Sale within seven (7) working days after the date on which the Total Amount Due is received from the buyer. If credit terms have been agreed between the Auctioneer and the buyer the Auctioneer shall remit to the seller the Proceeds of Sale not later than thirty (30) days after the date of the auction unless otherwise agreed by the seller.

If before the Total Amount Due is paid by the buyer the Auctioneer pays the seller an amount equal to the Proceeds of Sale then title to the Lot shall pass to the Auctioneer.

If the buyer fails to pay the Auctioneer the Total Amount Due within fourteen (14) days after the date of the auction, the Auctioneer shall endeavour to notify the seller and take the seller's instructions on the course of action to be taken and, to the extent that it is in the sole opinion of the Auctioneer feasible, shall endeavour to assist the seller to recover the Total Amount Due from the buyer provided that nothing herein shall oblige the Auctioneer to issue proceedings against the buyer in the Auctioneer's own name. If circumstances do not permit the Auctioneer to take instructions from the seller or, if after notifying the seller, it does not receive instructions within seven (7) days, the Auctioneer reserves the right, and is hereby authorised by the seller at the seller's expense, to agree special terms for payments of the Total Amount Due, to remove, store and insure the Lot sold, to settle claims made by or against the buyer on such terms as the Auctioneer shall in its absolute discretion think fit, to take such steps as are necessary to collect monies due by the buyer to the seller and, if necessary, to rescind the sale and refund money to the buyer.

##### Payment of Proceeds to Overseas Sellers

29. If the seller resides outside Ireland the Proceeds of Sale shall be paid to such seller in Irish Pounds unless it was agreed with the seller prior to the auction that the Proceeds of Sale would be paid in a currency (other than Irish Pounds) specified by the seller in which case the Proceeds of Sale shall be paid by the Auctioneer to the seller in such specified currency (provided that that currency is legally available to the Auctioneer in the amount required) calculated at the rate of exchange quoted to the Auctioneer by its bankers on the date of payment.

##### Charges for Withdrawn Lots

30. Once catalogued, Lots withdrawn from sale before proofing/publication of Catalogue will be subject to commission of 5% of the Auctioneer's latest estimate of the auction price of the Lot withdrawn together with VAT thereon and any expenses incurred by the Auctioneer in relation to the Lot. If Lots are withdrawn after proofing or publication of Catalogue they will be subject to a commission of 10% of the Auctioneer's latest estimate of the auction price of the Lot withdrawn together with VAT thereon and any expenses incurred by the Auctioneer in relation to the Lot. All commission hereunder must be paid for before Lots withdrawn may be removed.

#### Unsold Lots

31. Where any Lot fails to sell at auction the Auctioneer shall notify the seller accordingly and (in the absence of agreement between the seller and the Auctioneer to the contrary) such Lot may, in the absolute discretion of the Auctioneer, be re-entered in the next suitable auction unless instructions are received from the seller to the contrary, otherwise such Lots must be collected at the seller's expense within the period of thirty (30) days of such notification from the Auctioneer.

Upon the expiry of such period the Auctioneer shall have the right to sell such Lots by public auction or private sale and on such terms as the Auctioneer in its sole discretion may think fit. The Auctioneer shall be entitled to deduct from the price received for such Lots any sums owing to the Auctioneer in respect of such Lots including without limitation removal, storage and insurance expenses, any commission and expenses due in respect of the prior auction and commission and expenses in respect of the subsequent auction together with all reasonable expenses before remitting the balance to the seller. If the seller cannot be traced the balance shall be placed in a bank account in the name of the Auctioneer for the seller. Any deficit arising shall be due from the seller to the Auctioneer. Any Lots returned at the seller's request shall be returned at the seller's risk and expense and will not be insured in transit unless the Auctioneer is so instructed by the seller.

#### Auctioneer's Right to Photographs and Illustrations

32. The seller authorises the Auctioneer to photograph and illustrate any Lot placed with it for sale and further authorises the Auctioneer to use such photographs and illustrations and any photographs and illustrations provided by the seller at any time in its absolute discretion (whether or not in connection with the auction).

Catalogue illustrations are included at the discretion of the Auctioneer. Illustration charges will be calculated on the particular category of sale. These charges are subject to change. Irish Art Sale Illustrations: €150.00 full page, €100.00 half page, €50.00 other sizes. Fine Art Illustrations: Scaled fee: €100.00 for lots sold for €3,000.00 and over, hammer price, €50.00 for lots sold under €3,000.00 hammer price. All other sales: €25.00 per illustration. All lots illustrated and not sold are charged €25.00 per illustration.

#### VAT

34. It is presumed, unless stated to the contrary, that the items listed herein are auction scheme goods as defined in the Finance Act 1995.

#### 35. Artist's Resale Rights (Droit de Suite)

Government Regulations (S.1. 312/2006)

Under this legislation a royalty (droit de suite) is payable to artists or the artist's heirs (if deceased in the last 70 years) of E.U. Nationality on all works resold for €3,000 or more, other than those sold by the artist or the artist's agent.

The resale royalty payable is calculated as follows:

---

From €3,000 to €50,000 4%  
From €50,000.01 to €200,000 3%  
From €200,000.01 to €350,000 1%  
From €350,000.01 to €500,000 0.5%  
Exceeding €500,000 0.25%

The total amount of royalty payable on any individual sale shall not exceed €12,500. The seller is liable for payment (paragraph 7.1 of Government Regulations (S.1. 312/2006)) of this royalty on completion of the sale. The artist may request from the Auctioneer any information necessary to secure payment.

The Auctioneer will automatically deduct the amount due from the proceeds of sale and will hold in trust for the artist, their heirs or their representative for a period of 3 years from the date of sale. A vendor may choose to check the ARR Waiver on the Sale Receipt Contract indicating that they accept sole responsibility for the payment and authorises the Auctioneers to disclose their contact details to the artist, their heirs or their representative.



